

**Greater Derry-Salem
Cooperative Alliance for Regional Transportation (CART)**

Disadvantaged Business Enterprise Program

Fiscal Year 2008

**Cooperative Alliance for Regional Transportation
DBE Policies and Procedures**

CART DBE PROGRAM

Objectives /Policy Statement

CART has established a Disadvantaged Business Enterprise (DBE) program in accordance with regulations of the U.S. Department of Transportation (DOT), 49 CFR Part 26. CART has received Federal financial assistance from the Department of Transportation, and as a condition of receiving this assistance, CART has signed an assurance that it will comply with 49 CFR Part 26.

It is the policy of CART to ensure that DBEs, as defined in Part 26, have an equal opportunity to receive and participate in DOT-assisted contracts. It is also our policy:

- To ensure nondiscrimination in the award and administration of DOT assisted contracts;
- To create a level playing field on which DBEs can compete fairly for DOT assisted contracts;
- To ensure that the DBE Program is narrowly tailored in accordance with applicable law;
- To ensure that only firms that fully meet 49 CFR Part 26 eligibility standards are permitted to participate as DBEs;
- To help remove barriers to the participation of DBEs in DOT assisted contracts; and
- To assist the development of firms that can compete successfully in the market place outside the DBE Program.

The Executive Director has been delegated as the DBE Liaison Officer. In that capacity the Executive Director is responsible for implementing all aspects of the DBE program. Implementation of the DBE program is accorded the same priority as compliance with all other legal obligations incurred by CART in its financial assistance agreements with the Department of Transportation.

CART has disseminated this policy statement to the CART Board of Directors and all the components of our organization. We have distributed this statement to DBE and non-DBE business communities that perform work for us on DOT-assisted contracts by providing each with this statement either verbally or in writing, as deemed appropriate.

Eileen Maloney, Executive Director

Date

Nondiscrimination

CART will never exclude any person from participation in, deny any person the benefits of, or otherwise discriminate against anyone in connection with the award and performance of any contract covered by 49 CFR Part 26 on the basis of race, color, sex, or national origin.

In administering its DBE program, CART will not, directly or through contractual or other arrangements, use criteria or methods of administration that have the effect of defeating or substantially impairing accomplishment of the objectives of the DBE program with respect to individuals of a particular race, color, sex, or national origin.

DBE Program Updates (26.21)

We will continue to carry out this program until all funds from DOT financial assistance are expended. We will provide to DOT updates representing significant changes in the program.

Quotas (26.43)

We do not use quotas in any way in the administration of this DBE program.

DBE Liaison Officer (DBELO) (26.45)

We have designated the following individual as our DBE Liaison Officer: Ms. Eileen Maloney, P.O. Box 1466, Derry, NH 03038, (603) 434-3569, director@cart-rides.org. In that capacity, Ms. Maloney is responsible for implementing all aspects of the DBE program and ensuring that CART complies with all provisions of 49 CFR Part 26. Ms. Maloney is the Executive Director and sole employee of CART.

The DBELO is responsible for developing, implementing and monitoring the DBE program, in coordination other appropriate officials. Duties and responsibilities include the following:

1. Gathers and reports statistical data and other information as required by DOT.
2. Reviews third party contracts and purchases for compliance with this program.
3. Works to set overall annual goals.
4. Ensures that bid notices and requests for proposals are available to DBEs in a timely manner.
5. Identifies contracts and procurements so that DBE goals are included in solicitations (both race-neutral methods and contract specific goals) and monitors results.
6. Analyzes CART's progress toward goal attainment and identifies ways to improve progress.
7. Participates in pre-bid meetings.
8. Advises the CART Board of Directors on DBE matters and achievement.
9. Participates with legal counsel to determine contractor compliance with good faith efforts.
10. Provides DBEs with information and assistance in preparing bids.
11. Acts as liaison to the Uniform Certification Process in New Hampshire.
12. Provides outreach to DBEs and community organizations to advise them of opportunities.

Federal Financial Assistance Agreement Assurance

CART has signed the following assurance, applicable to all DOT-assisted contracts and their administration and will include this language in financial assistance agreements with its subrecipients. (Attachment B)

CART shall not discriminate on the basis of race, color, national origin, or sex in the award and performance of any DOT assisted contract or in the administration of its DBE Program or the requirements of 49 CFR Part 26. The recipient shall take all necessary and reasonable steps under 49 CFR Part 26 to ensure nondiscrimination in the award and administration of DOT assisted contracts. The recipient's DBE Program, as required by 49 CFR Part 26 and as approved by DOT, is incorporated by reference in this agreement. Implementation of this program is a legal obligation and failure to carry out its terms shall be treated as a violation of this agreement. Upon notification to CART of its failure to carry out its approved program, the Department may impose sanctions as provided for under Part 26 and may, in appropriate cases, refer the matter for enforcement under 18 U.S.C. 1001 and/or the Program Fraud Civil Remedies Act of 1986 (31 U.S.C. 3801 et seq.).

DBE Financial Institutions

CART encourages contractors and vendors to utilize the services of banks and other financial institutions owned and controlled by socially and economically disadvantaged individuals when such institutions are available. This issue is discussed at prebid/preproposal conferences. Names of known DBE financial institutions are included in the DBE Directory, described below.

If through our investigation, minority and/or women owned banks are found, CART shall, by letter, inform minority and women owned financial institutions of the provisions contained in CFR 49 § 26, relative to opportunities for their use in transportation-related projects. CART shall request that minority and women-owned financial institutions provide the department with documents outlining the extent of the services offered by such institutions and will disseminate information of the services offered by these institutions to the construction and transportation industries.

Directory

CART, under the State of New Hampshire's Uniform Certification Process, utilizes the NHDOT's Unified DBE Directory, identifying all firms eligible to participate as DBEs. The directory lists the firm's name, address, phone number, and the type of work the firm has been certified to perform as a DBE. The NHDOT maintains and updates the directory, which is printed three times a year. The latest Directory is made available at the NHDOT web site at, <http://www.state.nh.us/dot/business.htm>. It may also be requested directly from the NHDOT by calling their DBELO at (603) 271-6612, or by calling the CART DBELO (603) 437-9999. The Directory may be found in Attachment E to this program document.

The Directory does not contain any information that reasonably may be regarded as confidential nor does it include information about firms' qualifications, geographical preferences for work, performance track record, capitalization, etc. Inclusion in the Directory does not constitute an endorsement of the firms listed.

Required Contract Clauses (26.13, 26.29)

Contract Assurance (Nondiscrimination Assurance)

We will ensure that the following clause is placed in every DOT-assisted contract and subcontract:

The contractor or subcontractor shall not discriminate on the basis of race, color, national origin, or sex in the performance of this contract. The contractor shall carry out applicable requirements of 49 CFR Part 26 in the award and administration of DOT assisted contracts. Failure by the contractor to carry out these requirements is a material breach of this contract, which may result in the termination of this contract or such other remedy, as the recipient deems appropriate.

Prompt Payment

We will include the following clause in each DOT-assisted prime contract:

The prime contractor agrees to pay each subcontractor under this prime contract for satisfactory performance of its contract no later than thirty (30) days from the receipt of each payment the prime contractor receives from CART. The prime contractor agrees further to return retainage payments to each subcontractor within thirty (30) days after the subcontractor's work is satisfactorily completed. Any delay or postponement of payment from the above referenced time frame may occur only for good cause following written approval of CART. This clause applies to both DBE and non-DBE subcontractors.

Should CART fail to make payment to the DBE contractor within thirty (30) days after goods/services have been received and accepted, CART will pay any late fees normally assessed by the contractor in its regular course of business.

Disputes regarding payment for goods and/or services shall, to the extent reasonably feasible, be resolved through good faith negotiations between the parties. CART shall make every effort to limit the negotiating period for a time not to exceed 30 days. Failure to come to a negotiated settlement will allow the aggrieved party to seek recourse in the courts of law.

Monitoring and Enforcement Mechanisms (26.37)

We will bring to the attention of the Department of Transportation any false, fraudulent, or dishonest conduct in connection with the program, so that DOT can take the steps (e.g., referral to the Department of Justice for criminal prosecution, referral to the DOT Inspector General, action under suspension and debarment or Program Fraud and Civil Penalties rules) provided in 26.109. CART will consider similar action under our own legal authorities, including responsibility determinations in future contracts.

Overall Goals (26.45)

CART's overall goal for FY 2008 is the following: **0.5%** of the Federal financial assistance, exclusive of FTA funds used for the purchase of transit vehicles, will be expended in DOT-assisted contracts.

Given the amount of DOT-assisted contracts CART expects to let during this fiscal year, which is **\$525,152** this means that CART has set a goal of expending **\$2,626** with DBEs during this fiscal year.

Method of Calculating Goal

The following is a summary of the method we used to calculate this goal:

Step 1

Table 1 shows the products and services for which CART anticipates contracting during Fiscal Year 2008. The table shows the appropriate NAICS code for each product or service, as well as the anticipated percentage of overall contracting attributable to each type of product or service. Based on consultation with other transit agencies in New Hampshire, CART has defined its market area as the State of New Hampshire, for consistency with the NHDOT DBE Directory.

CART has used the U.S. Census Bureau's 2005 County Business Patterns (CBP) database to determine the number of businesses in our market area that perform work in each NAICS code. The New Hampshire Department of Transportation's DBE Directory was used to determine the number of DBE's in our market area that provide products or services in each of the corresponding NAICS categories. The number of DBEs was divided by the number of all businesses in each NAICS category. This number was then multiplied by the percentage of overall contract value attributable to that NAICS category, following the weighting recommendations in 49 CFR Part 26. The resulting percentages were then summed to obtain a base figure of **0.1%** for the relative availability of DBEs in our market.

Step 2

After the base figure was calculated, CART has sought any additional evidence for use in refining the base figure established in Step One, including past performance, input from other transit providers in adjacent regions, and any available disparity studies. As CART has been in service for only one year, we have limited past contracting to serve as a reference point. The vast bulk of CART's contracting (97%) is for vehicle operations and broker/manager/call center operations. No DBEs submitted proposals as part of the original procurement process that resulted in the selection of CART's current contractor for these services, Easter Seals of New Hampshire. No DBEs providing services in these categories are identified in the DBE Directory. Based on consultation with COAST, Manchester Transit Authority, NHDOT, the NH Commission on the Status of Women, and the Chambers of Commerce in Derry, Salem, and Plaistow, we are not aware of any potential DBEs providing vehicle operations and broker/manager/call center operations who may not have already been identified in the Directory. However, we have contacted two businesses owned by women, with whom CART currently contracts for marketing and accounting services, to encourage them to pursue DBE certification with the State of New Hampshire.

A number of DBEs in the NHDOT Directory do provide marketing, printing, and audit services for which CART anticipates contracting. COAST and the Manchester Transit Authority meet a substantial portion of their respective DBE goals through their contracts for marketing services – specifically transit advertising. Based on the past contracting experience of these two other transit agencies, and similar service needs anticipated by CART, we propose to **adjust our base figure of 0.1% upward to set a DBE Goal for FY2008 of 0.5%**. In FY2009 and subsequent years we anticipate setting a higher goal. However, given the timing of CART’s transition from operating under the umbrella of the Merrimack Valley Regional Transit Authority to becoming a Direct Recipient of FTA funding, we are already half way through FY2008.

No Disparity Studies have been performed, or are known to have been performed, for either Rockingham County or the State of New Hampshire.

Table 1 - Calculation of DBE Contracting Goal for CART for FY2008

Based on 2005 US Census County Business Pattern Data & NHDOT DBE Directory

NAICS Code	CART Contracting Need - Industry Description	Contracting Amount Projected in CART FY2008 Budget	Percent of Overall Contracting in FY2008 Budget	Businesses in NAICS Code State of NH 2005	Businesses in NHDOT DBE Directory Providing These Services	Step One Calculations	
						Step 1A Total Businesses /DBEs	Step 1B Weighted by % of Contract Value
See 4 Sub-Categories	Broker/Manager/Call Center Operations	\$ 109,564	21.1%	22	0	0.0%	0.000%
48511	Urban transit systems			4	0	0.0%	0.000%
485113	Bus & motor vehicle transit systems			3	0	0.0%	0.000%
485210	Interurban & rural bus transportation			6	0	0.0%	0.000%
485991	Special needs transportation			11	0	0.0%	0.000%
See 4 Sub-Categories	Paratransit Vehicle Operations	\$ 393,486	75.7%	22	0	0.0%	0.000%
48511	Urban transit systems			4	0	0.0%	0.000%
485113	Bus & motor vehicle transit systems			3	0	0.0%	0.000%
485210	Interurban & rural bus transportation			6	0	0.0%	0.000%
485991	Special needs transportation			11	0	0.0%	0.000%
541613	Marketing consulting services	\$ 4,150	0.8%	110	6	5.5%	0.044%
323110	Commercial Lithographic Printing	\$ 1,000	0.2%	80	2	2.5%	0.005%
541211	Offices of certified public accountants	\$ 3,500	0.7%	267	0	0.0%	0.000%
52421	Insurance agencies and brokers	\$ 3,230	0.6%	501	1	0.2%	0.001%
44312	Computer and Office Equipment	\$ 3,000	0.6%	81	6	7.4%	0.043%
541110	Offices of Lawyers	\$ 1,650	0.3%	776	1	0.1%	0.000%
		\$ 519,580	100.0%				0.093%

Step 1 - Result Based on Calculation Above **0.1%**

Step 2 - Recommended FY2008 Goal Based on Consideration of Additional Evidence **0.5%**

(past performance, information from adjacent transit agencies, any available disparity studies)

Transit Vehicle Manufacturers (26.49)

CART will require each transit vehicle manufacturer (TVM), as a condition of being authorized to bid or propose on FTA-assisted transit vehicle procurements, to certify that it has complied with the requirements of this section. Alternatively, CART may, at its discretion and with FTA approval, establish project-specific goals for DBE participation in the procurement of transit vehicles in lieu of the TVM complying with this element of the program.

Process

For FY2009 and subsequent years, CART will submit its overall goal to DOT on **August 1** of each year, except where we submit a project goal. Before establishing the overall goal each year, CART will consult with minority, women's and general contractor groups, community organizations, the FTA, the State of New Hampshire and other officials with whom this consultation normally occurs, without limiting consultation to these persons or groups, to obtain information concerning the availability of disadvantaged and non-disadvantaged businesses, the effects of discrimination on opportunities for DBEs, and CART's efforts to establish a level playing field for the participation of DBEs.

Following this consultation, we will publish a notice of the proposed overall goal, informing the public that the proposed goal and its rationale are available for inspection during normal business hours at the CART office for 30 days following the date of the notice, and informing the public that CART and DOT will accept comments on the goals for 45 days from the date of the notice. This notice will be advertised in the Manchester Union-Leader, the CART website (www.cart-rides.org), the NHDOT Labor Compliance Bureau, and the Chambers of Commerce in Derry, Salem, and Plaistow. Contact information for these outlets is identified in Appendix D. Normally, we will issue this notice by **June 1** of each year. The notice will include CART's address to which comments may be sent and the address where the proposal may be reviewed.

Our overall goal submission to DOT will include a summary of information and comments received during the public participation process and our responses.

As this document represents CART's first DBE plan, CART will begin using the goal set out here immediately for Fiscal Year 2008. For FY2009 and subsequent years, CART will begin using our overall goal on **October 1** of each year, the first day of CART's Fiscal Year, unless we have received other instructions from DOT

Breakout of Estimated Race-Neutral and Race-Conscious Participation

CART will meet the maximum feasible portion of its overall goal by using race-neutral means of facilitating DBE participation. CART uses the following race-neutral means to increase DBE participation:

1. Providing Technical assistance and other services to bidders upon request;
2. Providing information on DBE certification to known contractors who are not currently certified but are potentially eligible;
3. Distributing the DBE Directory to potential prime contractors.

We estimate that, in meeting our overall goal of **0.5%**, we will obtain this goal using race-neutral participation and anticipate not needing to pursue race-conscious measures.

The following is a summary of the basis of our estimated breakout of race-neutral and race-conscious DBE participation:

This estimate was derived based on information on the historical use of race-neutral and race-conscious measures by COAST and the Manchester Transit Authority to achieve DBE participation; and from the estimated type of contracting activities projected for the upcoming year (see Table 1). While no DBEs providing Broker/Manager Call Center services or Transit Vehicle Operations are identified in the NHDOT DBE Directory, a number of DBE contractors do provide marketing, printing, and audit services for which CART anticipates contracting.

We will adjust the estimated breakout of race-neutral and race-conscious participation as needed to reflect actual DBE participation in subsequent years (see 26.51(f)), and we will track and report race-neutral and race-conscious participation separately. For reporting purposes, race-neutral DBE participation includes, but is not necessarily limited to, the following: DBE participation through a prime contract a DBE obtains through customary competitive procurement procedures; DBE participation through a subcontract on a prime contract that does not carry a DBE goal; DBE participation on a prime contract exceeding a contract goal; and DBE participation through a subcontract from a prime contractor that did not weigh a firm's DBE status in making the award.

Contract Goals

CART will use contract goals to meet any portion of the overall goal CART does not project being able to meet using race-neutral means. Contract goals are established so that, over the period to which the overall goal applies, they will cumulatively result in meeting any portion of our overall goal that is not projected to be met through the use of race-neutral means.

We will establish contract goals only on those DOT-assisted contracts that have subcontracting possibilities. We need not establish a contract goal on every such contract, and the size of contract goals will be adapted to the circumstances of each such contract (e.g., type and location of work, availability of DBEs to perform the particular type of work). We will express our contract goals as a percentage of the Federal share of a DOT-assisted contract.

Good Faith Efforts (26.53)

CART treats bidders'/offerors' compliance with good faith efforts requirements as a matter of responsiveness. Each solicitation for which a contract goal has been established will require the bidders'/offerors to submit the following information at the time the bid/proposal is due.

- The names and addresses of DBE firms that will participate in the contract;
- A description of the work that each DBE will perform;
- The dollar amount of each DBE firm's participation;
- Written and signed documentation of commitment to use a DBE subcontractor whose participation it submits to meet a contract goal;

- Written and signed confirmation from the DBE that it is participating in the contract as provided in the prime contractor's commitment; and
- If the contract goal is not met, evidence of good faith efforts.

Demonstration of Good Faith Efforts

The obligation of the bidder/offeror is to make good faith efforts. The bidder/offeror can demonstrate that it has done so either by meeting the contract goal or documenting good faith efforts.

For contracts where DBE contract goals are established, contracts will only be awarded to the bidder/offeror who makes good faith efforts to meet the goal.

CART will determine that the bidder/offeror made good faith efforts by examining the following:

- Whether the contractor solicited, through all reasonable and available means, the interest of all certified DBEs who have the capability to perform the work of the contract.
- Whether the contractor solicited interest within sufficient time to allow the DBEs to respond and if appropriate steps were taken to follow up with interested DBEs.
- Whether the contractor negotiated in good faith with interested DBEs. Evidence of such negotiations should include the names, addresses and telephone numbers of DBEs that were considered; a description of the information provided regarding the plans and specifications for the work selected for subcontracting and evidence as to why additional agreements could not be reached.
- Whether the contractor effectively used the services of available minority/women community organizations, contractors' groups and other organizations to provide assistance in the recruitment and placement of DBEs.
- Whether other bidders on the procurement met the DBE goal.

The CART Executive Director is the sole employee of CART, and as such also serves in the role of DBE Liaison Officer (DBELO). The DBELO shall be responsible for determining whether a bidder/offeror who has not met the contract goal has documented sufficient good faith efforts to be regarded as responsive.

We will ensure that all information is complete and accurate and adequately documents the bidder/offeror's good faith efforts before we commit to the performance of the contract by the bidder/offeror.

Administrative reconsideration

Within five (5) business days of being informed by CART that it is not responsive because it has not documented sufficient good faith efforts, a bidder/offeror may request administrative reconsideration. The bidder/offeror should make this request in writing to the following reconsideration official: Ms. Eileen Maloney, Executive Director, 50 Nashua Road, Suite 102, Londonderry, NH 03053, (603) 437-9999. The reconsideration official will not have played any role in the original determination that the bidder/offeror did not make document sufficient good faith efforts.

As part of this reconsideration, the bidder/offeror will have the opportunity to provide written documentation or argument concerning the issue of whether it met the goal or made adequate good faith efforts to do so. The bidder/offeror will have the opportunity to meet in person with our reconsideration official to discuss the issue of whether it met the goal or made adequate good faith efforts to do. We will send the bidder/offeror a written decision on reconsideration, explaining the basis for finding that the bidder did or did not meet the goal or make adequate good faith efforts to do so. The result of the reconsideration process cannot be administratively appealed to the Department of Transportation.

Good Faith Efforts When a DBE is Replaced on a Contract

We will require a contractor to make good faith efforts to replace a DBE that is terminated or has otherwise failed to complete its work on a contract with another certified DBE, to the extent needed to meet the contract goal. We will require the prime contractor to notify the DBE Liaison Officer immediately of the DBE's inability or unwillingness to perform and provide reasonable documentation.

In this situation, we will require the prime contractor to obtain our prior approval of the substitute DBE and to provide copies of new or amended subcontracts, or documentation of good faith efforts. If the contractor fails or refuses to comply in the time specified, our contracting office will issue an order stopping all or part of payment/work until satisfactory action has been taken. If the contractor still fails to comply, the contracting officer may issue a termination for default proceeding.

Counting DBE Participation (26.55)

The value of the work actually performed by the DBE is the only work counted toward the DBE goals. CART will count the entire amount of a construction contract that is performed by the DBE's own forces. This includes the cost of supplies and materials purchased by the DBE for the work of the contract. The entire amount of fees or commissions charged by the DBE firm for services rendered such as professional, technical, consultant, or for providing bonds or insurance will be counted. DBE achievement will only be counted toward the overall goal after the DBE has been paid.

Certification (26.61 - 26.91)

CART defers to the NHDOT for the certification of DBEs under the State of New Hampshire's Unified Certification Program (UCP). The NHDOT will employ the certification standards of Subpart D of Part 26 and the certification procedures of Subpart E of Part 26 to determine the eligibility of firms to participate as DBEs in DOT-assisted contracts. To be certified as a DBE, a firm must meet all certification eligibility standards. The NHDOT makes its certification decisions based on the facts as a whole.

Information Collection and Reporting

Bidders List

CART will create a bidders list, consisting of information about all DBE and non-DBE firms that bid or quote on DOT-assisted contracts with CART. The purpose of this requirement is to allow use of the bidders list approach to calculating overall goals. The bidders list will include the name, address, DBE/non-DBE status, age, and annual gross receipts of firms.

We will collect this information in the following ways: A contract clause requiring prime bidders to report the names/addresses, and possibly other information, of all firms who quote to them on subcontracts; or a notice in all solicitations requesting to firms quoting on subcontracts that they report information directly to the recipient.

Monitoring Payments to DBEs

We will require prime contractors to maintain records and documents of payments to DBEs for three years following the performance of the contract. These records will be made available for inspection upon request by any authorized representative of CART or DOT. This reporting requirement also extends to any certified DBE subcontractor.

We will keep a running tally of actual payments to DBE firms for work committed to them at the time of contract award.

Interim audits of contract payments to DBEs will be performed. The audit will review payments to DBE subcontractors to ensure that the actual amount paid to DBE subcontractors equals or exceeds the dollar amounts stated in the schedule of DBE participation.

Compliance review procedures and template letters may be found in Attachment C.

Reporting to DOT

We will report DBE participation to DOT as follows:

We will report DBE participation on a semi-annual basis, using DOT Form 4630. These reports will reflect payments actually made to DBEs on DOT-assisted contracts.

Confidentiality

CART will safeguard from disclosure to third parties information that may reasonably be regarded as confidential business information, consistent with federal, state, and local law. The New Hampshire Revised Statutes provides for disclosure of "public records" pursuant to RSA 91-A:4. Under New Hampshire law, information submitted pursuant to CART's DBE program would likely be considered a "public record" and would be disclosed unless an exception to disclosure applies, as defined in RSA 91-A:5. In response to any request for information under RSA 91-A:4, CART will review federal, state and local law and then produce or withhold the information according to the requirements of all applicable law. Information that a DBE identifies as a trade secret will be specifically analyzed by CART to determine whether federal,

state and local law requires such information to be withheld from disclosure as a trade secret. If a DBE feels the information is a trade secret, they will be instructed to mark this on each page of the information submitted.

Notwithstanding any contrary provisions of state or local law, CART will not release personal financial information submitted in response to the personal net worth requirement to a third party (other than DOT).

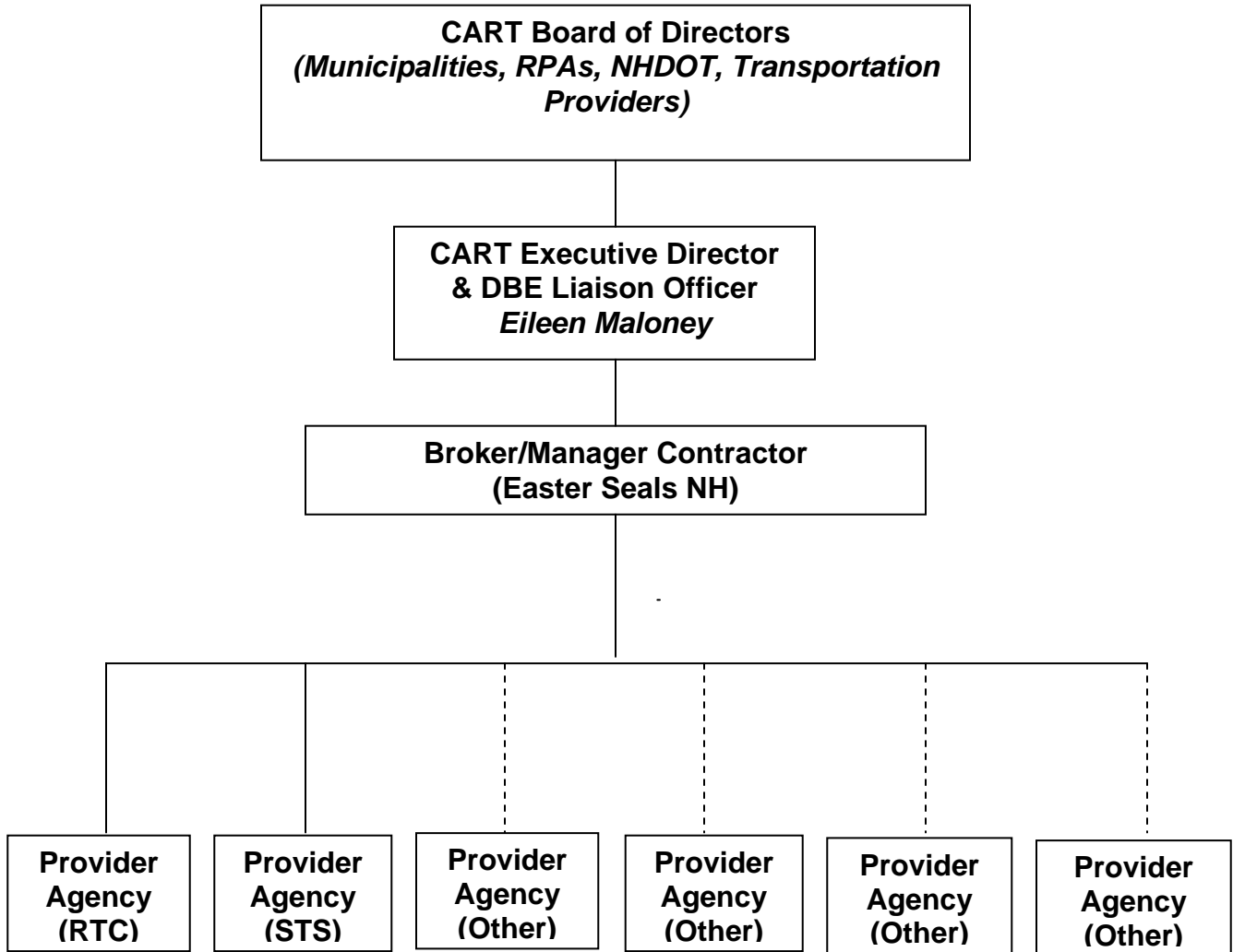
As required by the Department of Transportation, 49 CFR Parts 23 and 26, "It may be provided to a third party only with the written consent of the individual to whom the information pertains. This provision is specifically intended to preempt any contrary application of state or local law."

ATTACHMENTS

Attachment A	CART Organizational Chart
Attachment B	CART DBE Assurance
Attachment C	Template Letters for Contractor Compliance Monitoring
Attachment D	CART Public Notice Outlets
Attachment E	NHDOT DBE Directory
Attachment F	Regulations: 49 CFR Part 26

Attachment A

CART Organizational Structure



Attachment B

Federal Financial Assistance Agreement Assurance Regarding Contracting with Disadvantaged Business Enterprises

Assurance: 26.13(a)

CART shall not discriminate on the basis of race, color, sex or national origin in the award and performance of any DOT assisted contract or in the administration of its DBE Program or the requirements of 49 CFR Part 26.

CART shall take all necessary and reasonable steps under 49 CFR Part 26 to ensure nondiscrimination in the award and administration of DOT assisted contracts. CART's DBE Program, as required by 49 CFR Part 26 and as approved by DOT, is incorporated by reference in this agreement. Implementation of this program is a legal obligation and failure to carry out its terms shall be treated as a violation of this agreement.

Upon notification to CART of its failure to carry out its approved program, the Department may impose sanctions as provided for under Part 26 and may, in appropriate cases, refer the matter for enforcement under 18 U.S.C. 1001 and/or the Program Fraud Civil Remedies Act of 1986 (31 U.S.C. 3801 et seq.).

This language will appear in financial assistance agreements with sub-recipients.

Contract Assurance: 26.13b

CART will ensure that the following clause is placed in every DOT-assisted contract and subcontract:

The contractor, sub-recipient, or subcontractor shall not discriminate on the basis of race, color, national origin, or sex in the performance of this contract. The contractor shall carry out applicable requirements of 49 CFR Part 26 in the award and administration of DOT assisted contracts. Failure by the contractor to carry out these requirements is a material breach of this contract, which may result in the termination of this contract or such other remedy as the recipient deems appropriate.

Eileen Maloney, Executive Director

Date

**ATTACHMENT C-1
FORM LETTER 1
Desk Audit of Prime Contractor**

Date

Prime Contractor

Attn: _____

Street Address

City, State, Zip

Dear: _____

RE: *Procurement Name*
 Nature of Work Performed by DBE

This is to notify you that the Cooperative Alliance for Regional Transportation (CART) is conducting a compliance review pursuant to Disadvantaged Business Enterprise utilization in the above-referenced contract

Our examination of your monthly statements of income from CART and the affirmations of _____ (*insert name of DBE*) indicate income to the disadvantaged business enterprise in an amount consistent with the provisions of the above-referenced contract.

This review is for the purpose of determining the nature of the work being performed by _____ (*insert name of DBE*). The first step of this review is a desk audit, for the purpose of which we are requesting that you submit the following documents for our review:

- *List here the documents required such as the contract between the prime contractor and the DBE subcontractor, records of time spent by the DBE subcontractor, etc.*

CART reserves the right to request corroborating data from _____ (*insert name of DBE*).

In addition, subsequent to the review of the information requested herein, CART may conduct an onsite review for the purpose of collecting additional data before determining the compliance status of _____ (*insert name of prime contractor*).

All documents requested herein must be submitted to the undersigned no later than _____ (*insert appropriate date*).

If you have any questions regarding this matter, please contact me at 603-437-9999 or director@cart-rides.org.

Sincerely,

Eileen Maloney
CART Executive Director

**ATTACHMENT C-2
FORM LETTER 2
General Desk Audit of Prime Contractor**

Date

Prime Contractor

Attn: _____

Street Address

City, State, Zip

Dear: _____:

RE: *Procurement Name*

This is to notify you that the Cooperative Alliance for Regional Transportation (CART) is conducting a compliance review pursuant to Disadvantaged Business Enterprise utilization in the above-referenced contract.

We have been unable to determine from your monthly statements of income from CART whether or nor you are complying with your commitment to subcontract with _____ (*insert name of DBE*) for a specific portion of the work under the above-referenced contract.

Our examination of your monthly statements of income from CART and the affirmations of indicate income to the disadvantaged business enterprise in an amount consistent with the provisions of the above-referenced contract.

The first step of this review is a desk audit, for the purpose of which we are requesting that you submit the following documents for our consideration:

- *List here the documents required such as the contract between the prime contractor and the DBE subcontractor, records of time spent by the DBE subcontractor, evidence of payments by the prime contractor to the DBE subcontractor, etc.*

CART reserves the right to request corroborating data from _____ (*insert name of DBE*).

In addition, subsequent to the review of the information requested herein, CART may conduct an onsite review for the purpose of collecting additional data before determining the compliance status of _____ (*insert name of prime contractor*).

All documents requested herein must be submitted to the undersigned no later than _____ (*insert due date*).

If you have any questions regarding this matter, please contact me at 603-437-9999 or director@cart-rides.org.

Sincerely,

Eileen Maloney
CART Executive Director

**ATTACHMENT C-3
FORM LETTER 3
Notification of Compliance**

Date

Prime Contractor

Attn: _____

Street Address

City, State, Zip

Dear: _____:

RE: *Procurement Name*

The Cooperative Alliance for Regional Transportation (CART) has completed its compliance review relative to the above-referenced contract.

This is to notify you that, as of this date ____(insert name of prime contractor)____ is in compliance with DBE utilization plan regarding the referenced contract.

CART reserves the right to conduct additional compliance reviews at any time during the life of the above-referenced contract or any time within three (3) years after completion of the work specified in the contract.

Thank you for your cooperation in this matter. If you have any questions, please contact me at 603-437-9999 or director@cart-rides.org.

Sincerely,

Eileen Maloney
CART Executive Director

**ATTACHMENT C-4
FORM LETTER 4
Onsite Review of Prime Contractor**

Date

Prime Contractor

Attn: _____

Street Address

City, State, Zip

Dear: _____:

RE: *Procurement Name*

As part of its compliance review to ensure DBE utilization in the above-referenced contract, the Cooperative Alliance for Regional Transportation (CART) has determined that it is necessary to conduct an onsite review. The purpose of the onsite visit will be to collect sufficient data to determine the compliance status of _____ (insert name of prime contractor) _____.

We have scheduled the onsite review for _____ (insert appropriate date and time) _____ and expect that it will take no longer than _____ hours. If this date is inconvenient for you, please call me at (603) 437-9999 so that we can work out a mutually convenient time for the visit.

During the onsite review, we shall want to interview the following individuals: _____ (insert names and titles or persons to be interviewed) _____. In addition, we shall want to review the following files and documents:

- Doc #1
- Doc #2
- etc...

We may also wish to visit the site at which _____ (insert name of DBE) _____ is performing work pursuant to the above-referenced contract.

If you have any questions regarding this matter, please contact me at 603-437-9999.

Sincerely,

Eileen Maloney
CART Executive Director

**ATTACHMENT C-5
FORM LETTER 5
Desk Audit of Disadvantaged Business Enterprise Subcontractor**

Date

DBE Subcontractor

Attn: _____

Street Address

City, State, Zip

Dear: _____:

RE: *Procurement Name*

The Cooperative Alliance for Regional Transportation (CART) is conducting a compliance review of (insert name of prime contractor) for the purpose of determining their adherence to said contractor's DBE utilization plan, which is part of their contract with CART.

According to that contract, (insert name of DBE) is performing certain work as a subcontractor.

The first step in the compliance review is a desk audit. In order that we may confirm information contained in the above-referenced contract, as well as data received subsequently from of (insert name of prime contractor), we are requesting that you submit the following documents for our consideration:

- Doc #1
- Doc #2
- etc...

CART reserves the right to conduct an onsite review for the purpose of collecting additional data before determining the compliance status of (insert name of prime contractor).

All documents requested herein must be submitted to the undersigned no later than (insert due date).

If you have any questions regarding this matter, please contact me at 603-437-9999.

Sincerely,

Eileen Maloney
CART Executive Director

ATTACHMENT C-6
FORM LETTER 6
Onsite Review of Disadvantaged Business Enterprise Subcontractor

Date

DBE Subcontractor

Attn: _____

Street Address

City, State, Zip

Dear: _____:

RE: *Procurement Name*

The Cooperative Alliance for Regional Transportation (CART) is conducting a compliance review of (insert name of prime contractor) for the purpose of determining their adherence to said contractor's DBE utilization plan, which is part of their contract with CART.

According to that contract, (insert name of DBE) is performing certain work as a subcontractor.

In order to collect sufficient data to determine the compliance status of (insert name of prime contractor), we have scheduled an onsite review of your facilities for than (insert appropriate date and time) and expect that it will take no longer than _____ hours. If this date is inconvenient for you, please call me at (603) 437-9999 so that we can work out a mutually convenient time for the visit.

During the onsite review, we shall want to interview the following individuals: (insert names and titles of persons to be interviewed). In addition, we shall want to review the following files and documents:

- **Doc #1**
- **Doc #2**
- **etc...**

If the site at which you are performing work in connection with the above-referenced contract is other than the main office of (insert name of DBE), we may also wish to visit that site as well.

If you have any questions regarding this matter, please contact me at 603-437-9999.

Sincerely,

Eileen Maloney
CART Executive Director

Attachment D

Greater Derry-Salem Cooperative Alliance for Regional Transportation (CART) DBE Public Notice Outlets

NHDOT Labor Compliance Office
P.O. Box 483, 7 Hazen Drive
Concord, NH 03302-0483

John Ankenbrock
jankenbrock@dot.state.nh.us
(603) 271-2467

Manchester Union Leader
(800) 562-8218
Advertising@UnionLeader.com

Greater Derry Chamber of Commerce
29 W Broadway
Derry, NH 03038

Gina Gulino-Payne, Executive Director
derrychamber@earthlink.net
(603) 432-8205

www.derry-chamber.org

Greater Salem Chamber of Commerce
224 N Broadway # E1
Salem, NH 03079
www.salemnhchamber.org

Donna Morris, Executive Director
donna@gschamber.com
(603) 893-3177

Plaistow Area Commerce Exchange
76 Main St
Plaistow, NH 03865
www.pacenh.com

Laurie Ota, Secretary
(603) 382-3634

NH Commission on the Status of Women
25 Capital Street
Concord NH 03301
www.nh.gov/csw/

Sylvia Gale, Executive Director
cmsweb@nh.gov
(603) 271-2660

Women's Business Center
1555 Lafayette Road
Portsmouth, NH 03801
www.womenbiz.org

Sharon Drake, Executive Director
info@WomenBiz.org
(603) 430-2892

CART Office & Web Site
50 Nashua Road, Suite 102
Londonderry, NH 03053
www.cart-rides.org

Lee Maloney, Executive Director & DBELO
director@cart-rides.org
(603) 437-9999

ATTACHMENT E
NHDOT DBE Directory



A & E FLOORING, INC

WBE

Contact: GUILD HILL
Address: 59 LONDONDERRY TNPK
 HOOKSETT NH 03106
Tel: 603 625 1266
Fax: 603 644 1838
e-mail: sales@aeflooring.com
web site: www.aeflooring.com

Products and Services

Flooring

Ceramic tile, hardwood, wood laminates, epoxy flooring, carpet, vinyl and mats

A. LAUGENI & SON, INC.

WBE

Contact: JOYCE LAUGENI
Address: 370 ARDALE ST PO BOX 26034
 WEST HAVEN CT 06516
Tel: 203 934 5302
Fax: 203 934 0562
e-mail: a_laugeni_son@sbcglobal.net
web site:

Products and Services

Abatement Svcs
 Blasting
 Bridge Inspection
 Bridge Painting
 Containment
 Lead Abatement Services
 Traffic equipment rental and sales.

ACT ABATEMENT CORPORATION

DBE

Contact: ERIC JETER
Address: 18 BROADWAY STREET
 LAWRENCE MA 01840
Tel: 978 794 9530
Fax: 978 794 3563
e-mail: ejeter@actabatement.com
web site:

Products and Services

Abatement Svcs
 Asbestos Removal
 Demolition

AGUILA CONSTRUCTION COMPANY

MBE

Contact: JUAN ALONSO
Address: 134 CRAWFORD STREET
 FITCHBURG MA 01420
Tel: 978 342 1100
Fax: 978 343 0076
e-mail:
web site:

Products and Services

Road Construction
 Masonry work
 Sitework

Inverts, catch basins, and manholes



ALONSO CONSTRUCTION CO

MBE

Contact: JUAN J ALONSO
Address: 134 CRAWFORD STREET
 FITCHBURG MA 01420
Tel: 978 343 0033
Fax: 978 343 0076
e-mail:
web site:

Products and Services

Inverts
 Manholes

AMERICAN INDIAN BUILDERS AND SUPPLIERS, INC.

MWBE

Contact: ELMA R. PATTERSON
Address: 1162 RIDGE ROAD
 LEWISTON NY 14092
Tel: 716 754 8385
Fax: 716 754 8636
e-mail: info@americanindianbuilders.com
web site: www.americanindianbuilders.com

Products and Services

Concrete Products	Hydrants	Rebar
Bridge Work	Metal Fabrication	Reinforcing Steel
Culverts	Pipe	Septic Systems
Drainage	Plumbing	Sign Structures
Electrical	Pre-Cast Concrete	Steel Erection
Highway Lighting	Pull Boxes, Light Bases	

Bridge Paint, Structural Paint, and Water Lines,

ANNSEAL, INC

WBE

Contact: NANCY O'BRIEN
Address: PO BOX 615
 BIBLE SCHOOL PARK NY 13737
Tel: 607 797 3737
Fax: 607 797 2877
e-mail: nobrien@annseal.com
web site: www.annseal.com

Products and Services

Crack Filling
 Flagging
 Joint Repair
 Sawcut & Seal
 Traffic Control

ARMAND LEMIRE CO, INC

WBE

Contact: DIANE BAINES
Address: 7 DARTMOUTH ST PO BOX 16454
 HOOKSETT NH 03106
Tel: 603 625 5233
Fax: 603 625 5679
e-mail: aelcoinc@aol.com
web site:

Products and Services

HVAC
 Plumbing

New construction, renovations and tenant fit-ups.



AYER ELECTRIC, LLC **DBE**

Contact: DAVID AYER
Address: PO BOX 1363
 DOVER NH 03821
Tel: 603 868 6446
Fax: 603 868 7290
e-mail: ayerelectricllc@metrocast.net
web site:

Products and Services

Electrical
 Highway Lighting
 Pull Boxes, Light Bases
 Site Lighting

BII FENCE & GUARDRAIL, INC **MBE**

Contact: REX BARROS
Address: 15 DUTILE ROAD
 BELMONT NH 03220
Tel: 603 524 1415
Fax: 603 524 1443
e-mail: Barrosind@metrocast.net
web site:

Products and Services

Bridge Rail
 Fencing
 Fence Products
 Guardrail
 Playgrounds

BLACK ROCK PAVING, INC **MBE**

Contact: VICTOR MONI Z
Address: 100 ZI ON HILL RD, PO BOX 1718
 SALEM NH 03079
Tel: 603 898 1967
Fax: 603 898 1968
e-mail: blackrock1994@aol.com
web site:

Products and Services

Curbing
 Paving
 Sidewalk

BROOKSTONE BUILDERS, INC **WBE**

Contact: PAULA SCALES
Address: 600 HARVEY ROAD
 MANCHESTER NH 03103
Tel: 603 641 9455
Fax: 603 641 9477
e-mail: paula.scales@brookbuild.com
web site: www.brookbuild.com

Products and Services

Building Trade Work
 Carpentry
 Construction Management

Design/Build General Contractor



CARON PIPE JACKING, INC **WBE**

Contact: JACQUELINE MALS

Address: 77 WILLOW BROOK DRIVE
BERLIN CT 06037

Tel: 860 828 0050

Fax: 860 828 9568

e-mail: info@pipejackingne.com

web site: www.pipejackingne.com

Products and Services

Culverts
Pipe Jacking
Horizontal Boring
Soil Stabilization

Underground Construction

COASTAL LANDSCAPING, LLC **WBE**

Contact: LYN STEVENS

Address: PO BOX 388
HAMPTON FALLS NH 03844

Tel: 603 929 0866

Fax: 603 929 0431

e-mail: lee.stevens2@comcast.net

web site: www.coastallandscaping.net

Products and Services

Curbing
Hydroseeding
Landscaping
Demolition
Plantings
Irrigation

Excavation
Septic Systems
site work
Sodding

Asphalt paving, stone walls, and walkways

CONSTRUCTION MATERIALS TESTING, INC **WBE**

Contact: SUSAN F DEAN

Address: 88 SOUTH WHITEFIELD RD
WHITEFIELD NH 03598

Tel: 603 837 9332

Fax: 603 837 9335

e-mail: warden@ncia.net

web site:

Products and Services

Material Testing

CONTROLLED SYSTEMS HVAC, INC **WBE**

Contact: KATHY FERGUSON

Address: 50A NORTHWESTERN DR. #1
SALEM NH 03079

Tel: 603 870 9050

Fax: 603 870 8191

e-mail: controlledsystems.HVAC@comcast.net

web site: www.controlled-systems.com

Products and Services

HVAC & R

HVAC & R sales, service, installation, maintenance and design



COURT ONE CORPORATION

WBE

Contact: STACEY COMARTOS
Address: 248 WEST 24TH STREET
 NORFOLK VA 23517
Tel: 757 640 1800
Fax: 757 640 1855
e-mail: scomartos@courtonecorp.com
web site:

Products and Services

Fencing

CREADOR CONSTRUCTION COMPANY INC

WBE

Contact: EMILIA CREADOR
Address: 3 FORSYTH AVENUE
 SOMERSET MA 02726
Tel: 508 679 5348
Fax: 508 679 9909
e-mail:
web site:

Products and Services

Concrete Work
 Curbing

CUSTOM COPPER AND SLATE, LTD

WBE

Contact: SHARON GREEN
Address: PO BOX 662
 MEDFIELD MA 02052
Tel: 508 242 9971
Fax: 508 242 9972
e-mail: customcopperandslate@comcast.net
web site:

Products and Services

Roofing
 Building Trade Work
 Carpentry
 Construction Management
 Gutters
 Masonry work
 Metal Fabrication
 Roofing contractor providing commercial and residential roofing; architectural sheet metal and fabrication

CWS FENCE & GUARDRAIL CO

WBE

Contact: LORRAINE SLITER
Address: 18 TEN PENNY LANE, RTE 11
 ANDOVER NH 03216
Tel: 603 735 5465
Fax: 603 735 5547
e-mail: cwsfence@tds.net
web site: www.cwsfence.com

Products and Services

Bridge Rail
 Guardrail
 Highway construction guardrail and bridgerail.



D.L. KING & ASSOCIATES, INC

WBE

Contact: DONNA KING

Address: 27 TANGLEWOOD DRIVE
NASHUA NH 03062

Tel: 603 883 5880

Fax: 603 883 5061

e-mail: dlking03031@aol.com

web site: www.dlking-ass.com

Products and Services

Abatement Svcs
Construction Management
Environmental
Remediation

DESMARAIS & SONS CONSTRUCTION LLC

WBE

Contact: DOREEN DESMARAIS

Address: 94 BLAKES HILL ROAD
NORTHWOOD NH 03261

Tel: 603 942 7530

Fax: 603 942 7512

e-mail: doreend@netzero.net

web site:

Products and Services

Clearing/Grubbing	Septic Systems
Culverts	Sewer Lines
Drainage	Sitework
Excavation	Water lines
Fire Hydrant Install	
Manhole Coring	

DOW COMPANY INC, THE

WBE

Contact: MARY H DOW

Address: 1112 BROADWAY ROAD
DRACUT MA 01826

Tel: 978 682 1414

Fax: 978 654 5190

e-mail: mikedow@thedowcompany.com

web site:

Products and Services

Sitework
Excavation
Demolition

Also, underground piping

EDM CONSTRUCTION, INC.

WBE

Contact: JACQUELYN MAGILL

Address: 125 EAST MAIN STREET
MERRIMAC MA 01860

Tel: 978 346 9898

Fax: 978 346 9833

e-mail: jacquiemagill@comcast.net

web site:

Products and Services

Bridge Expansion Joints	Rebar
Bridge Rail	Reinforcing Steel
Fence Products	SIP Decking
Joint Repair	Steel Erection
Metal Fabrication	Welding
Pre-Cast Concrete	Flagging



ELECTRICAL INSTALLATIONS, INC **WBE**

Contact: DARLENE M FRITZ
Address: 397 WHITTIER HWY
 MOULTONBORO NH 03254
Tel: 603 253 4525
Fax: 603 253 6284
e-mail: darlene.fritz@eii-hq.com
web site: www.eii-hq.com

Products and Services

Electrical

Instrumentation and control systems

ENVIRONMENTAL SOURCE CORPORATION **DBE**

Contact: JOSE PENA
Address: 181 CANAL STREET, 3RD FLOOR
 LAWRENCE MA 01840
Tel: 978 681 7888
Fax: 978 681 8474
e-mail: jpena@esourcecorp.net
web site: www.esourcecorp.net

Products and Services

Abatement Svcs
 Asbestos Removal
 Demolition

Lead abatement/mold remediation

FEDERAL FLOOR, INC. **WBE**

Contact: CAROLE A. SOUZA
Address: PO BOX 337, 39 JEREMY HILL RD
 PELHAM NH 03076
Tel: 603 635 3836
Fax: 603 635 3836
e-mail: ffipelhamnh@verizon.net
web site: www.federalfloor.com

Products and Services

Epoxy Flooring
 Shotblasting

Epoxy; Urethane; Resurfacing; In the floor logo design; Concrete restoration;
 Concrete staining

FISHER CONTRACTING CORPORATION **WBE**

Contact: CHARRAN FISHER
Address: PO BOX 20722
 WORCESTER MA 01602
Tel: 508 421 6989
Fax: 508 797 4450
e-mail: contact@fishercorp.us
web site:

Products and Services

Abatement Svcs
 Asbestos Removal
 Bridge Work
 Demolition
 Excavation

Masonry work

Speciality is demolition, also performs joint ventures on asbestos, remediation and masonry work



FITZGERALD GRADING, INC

WBE

Contact: PAMELA FITZGERALD

Address: 6 TOPPAN LANE
HAMPTON FALLS NH 03844

Tel: 603 926 2120

Fax: 603 926 2120

e-mail:

web site:

Products and Services

Grading
Reclaiming

FLETCH'S SANDBLASTING & PAINTING, INC

WBE

Contact: CHERYL FLETCHER

Address: 52 SHIRKING ROAD
EPPING NH 03042

Tel: 603 679 3400

Fax: 603 679 3465

e-mail: fletchssandblasting@hotmail.com

web site: www.fletchssandblasting.com

Products and Services

Bridge Painting
Demolition
Lead Abatement Services
Shotblasting
Structural Painting
Sandblasting

GEOLOGIC-EARTH EXPLORATION, INC

WBE

Contact: DEBORAH Q AREY

Address: 7 SHERWOOD DRIVE
NORFOLK MA 02056

Tel: 508 384 4434

Fax: 508 384 4452

e-mail: deb@geologicinc.com

web site:

Products and Services

Borings
Drilling
Geotechnical

Provide labor and equipment to perform excavation and drilling for environmental and geotechnical projects.

GVC CONSTRUCTION & ENGINEERING, INC.

MWBE

Contact: GESELLE VALENTI

Address: PO BOX 693
LEOMINSTER MA 01453

Tel: 978 630 5400

Fax: 978 630 5544

e-mail: gesellev@gvcconstruction.com

web site: www.gvcconstruction.com

Products and Services

Road Construction	Pre-Cast Concrete	Drainage
Concrete Work	Pipe	Curbing
Sitework	Paving	
Water lines	Manholes	
Sewer Lines	Landscaping	
Sidewalk	Excavation	
Utility Installations		



INFINITI STEEL INC.

MBE

Contact: GARY W. BUTLER

Address: PO BOX 41627
PROVIDENCE RI 02940

Tel: 401 640 9372

Fax: 401 941 3090

e-mail: infinitisteel@hotmail.com

web site:

Products and Services

Bridge Expansion Joints
Bridge Rail
Bridge Work
Pre-Cast Concrete
Rebar
Reinforcing Steel
Misc. Iron Stair Railing, Site Rails

Shear Connectors
Shear Stud Welding
Steel Erection
Welding

INTERPORT TOWING & TRANSPORTATION, INC

WBE

Contact: LUCINDA SMITH

Address: PO BOX 30
SOUTHPORT ME 04576

Tel: 207 633 4268

Fax: 207 633 4401

e-mail: interport@adelphia.net

web site:

Products and Services

Barge Transport
Tug Service
Marine Construction Svcs
Dredge assistance, crew boat and safety boat services

J & S CONCRETE PUMPING AND GROUTING, INC

WBE

Contact: JULIE GUARINO

Address: 71 ADAMS POND ROAD
DERRY NH 03038

Tel: 603 432 8017

Fax: 603 432 8017

e-mail: jscon@comcast.net

web site:

Products and Services

Concrete Work
Concrete Repair; Shotcrete; Pressure Grouting; Crack Repair

J.C. ELECTRIC, INC

DBE

Contact: JOHN CRUZ

Address: 95 HATHAWAY ST PO BOX 27120
PROVIDENCE RI 02907

Tel: 401 941 7600

Fax: 401 941 7630

e-mail: john@jcelectricinc.com

web site:

Products and Services

Electrical
Highway Lighting
Site Lighting
Traffic Signal
Electrical contractor



J.S. SERVICES, INC

WBE

Contact: JANICE STAFFIERY
Address: 91 HIGHLAND ROAD
 SOUTH HAMPTON NH 03827
Tel: 603 394 9940
Fax: 603 394 7037
e-mail: janstaf@comcast.net
web site:

Products and Services

Carpentry

General carpentry firm specializing in the Installation of doors and hardware

JCB COLBY, INC

WBE

Contact: JEAN IRIANA COLBY
Address: PO BOX 123
 LUNENBURG VT 05906
Tel: 802 892 7795
Fax: 802 892 1143
e-mail:
web site:

Products and Services

Masonry work
 Sidewalk

L & D SAFETY MARKING CORPORATION

WBE

Contact: LORENA R LAPRADE
Address: 115 INDUSTRIAL LN-BERLIN
 BARRE VT 05641
Tel: 802 223 6154
Fax: 802 229 1848
e-mail: Lindsay@worksafetci.com
web site:

Products and Services

Pavement Markings
 Traffic Signs

LIBERTY OVERHEAD DOOR

WBE

Contact: MELISSA WHITTAKER
Address: 19 JOHNSON MILL ROAD
 ORRINGTON ME 04474
Tel: 603 934 7504
Fax: 603 934 7504
e-mail: libertydoornh@aol.com
web site:

Products and Services

Sales, service and installation of residential and commercial overhead doors and motors



LY TRUCKING, INC.

WBE

Contact: LINDA I. LABBE

Address: 1464 NORTH BAYLEY HAZEN RD
EAST RYEGATE VT 05042

Tel: 802 584 4251

Fax: 802 584 4133

e-mail: rlmeadow@aol.com

web site:

Products and Services

Trucking

Construction Trucking

MAINE REBAR SERVICES, INC

WBE

Contact: ERNESTINE M WOODBURY

Address: PO BOX 2003
WINDHAM ME 04062

Tel: 207 892 2851

Fax: 207 893 0088

e-mail: Mainerebar@msn.com

web site:

Products and Services

Rebar

Rebar Materials

Supply and install reinforcing steel

MARIKINA ENGINEERING & CONSTRUCTION CORP.

DBE

Contact: ROMEO CRUZ

Address: 139 DOGBURN ROAD
WEST HAVEN CT 06516

Tel: 203 799 1013

Fax: 203 799 8382

e-mail: marikinacorp@aol.com

web site:

Products and Services

Steel Erection

Bridge Removal

Concrete Work

Guardrail

Septic Systems

Signs

MAUREEN ELECTRICAL, INC

WBE

Contact: MAUREEN THOMPSON

Address: 9 BERKSHIRE STREET
HAVERHILL MA 01832

Tel: 978 374 2476

Fax: 978 374 5213

e-mail: MaureenElectrical@comcast.net

web site:

Products and Services

Electrical

Master Electrician #A17353



MEDEIROS HYDROSEEDING & LANDSCAPING CONSTRUCTION **DBE**

Contact: BRADFORD MEDEIROS
Address: 165 BUMSTEAD ROAD
 MONSON MA 01057
Tel: 413 267 4050
Fax: 413 267 5679
e-mail:
web site:

Products and Services

Hydroseeding
 Landscaping

M-O-N LANDSCAPING INC. **DBE**

Contact: FERNANDO SOUSA
Address: 678 STATE ROAD, PO BOX 70220
 NORTH DARTMOUTH MA 02747
Tel: 508 679 3994
Fax: 508 679 0390
e-mail: fernando@monlandscaping.com
web site:

Products and Services

Clearing/Grubbing	Sidewalk
Grading	Sodding
Hydroseeding	Tree Removal
Irrigation	
Landscaping	
Plantings	

MOOSEHEAD HARVESTING, INC **WBE**

Contact: KATHLEEN REED
Address: PO BOX 159
 LINCOLN NH 03251
Tel: 603 745 6604
Fax: 603 745 6604
e-mail: anne_mooseheadharvestinc@earthlink.n
web site:

Products and Services

Clearing/Grubbing
 Crush
 Excavation
 Grading
 Sitework

NICOM COATINGS CORPORATION **WBE**

Contact: ROBIN C NICHOLSON
Address: PO BOX 727
 BARRE VT 05641
Tel: 802 229 5261
Fax: 802 229 5222
e-mail: rnicholson@nicomcoatings.com
web site: www.nicomcoatings.com

Products and Services

Bridge Deck Membrane	Sealcoating
Bridge Expansion Joints	Pavement Markings
Bridge Waterproofing	
Crack Filling	
Joint Repair	
Sawcut & Seal	



NL CONSTRUCTION, INC

WBE

Contact: JOAN LUPA

Address: 545 WEST STREET
LUDLOW MA 01056

Tel: 413 589 9883

Fax: 413 589 9736

e-mail: Joan@nlconstruction.com

web site: www.nlconstruction.com

Products and Services

Carpentry	Masonry work
Construction Management	Sewer Lines
Demolition	Sitework
Drainage	
Excavation	
Grading	

NORTH STAR PAINTING CO., INC.

WBE

Contact: IRENE N KALOURIS

Address: 3526 MCCARTNEY ROAD
YOUNGSTOWN OH 44505

Tel: 330 743 2333

Fax: 330 743 3434

e-mail: kalouris@neo.rr.com

web site:

Products and Services

Bridge Painting
Bridge Waterproofing
Shotblasting
Structural Painting

P & R EXCAVATING SERVICE INC

WBE

Contact: MARI LYN CRANE

Address: 172 MAIN STREET
LANCASTER NH 03584

Tel: 603 788 3770

Fax: 603 788 3858

e-mail: PTMC@PRODIGY.NET

web site:

Products and Services

Trucking	Drainage
Clearing/Grubbing	Excavation
Cofferdam	Fire Hydrant Install
Culverts	Sewer Lines
Road Construction	Water lines
Demolition	Sidewalk
Water pressure testing, Repairing manholes and catch basins	

PAIGE WELDING CO, INC

WBE

Contact: GAYLE PAIGE

Address: PO BOX 104
WENTWORTH NH 03282

Tel: 603 764 5588

Fax: 603 764 9489

e-mail: g.paige@juno.com

web site:

Products and Services

Concrete Anchors
Shear Connectors
Stud Welding



PORTLAND ASPHALT, LLC

MBE

Contact: DAVID FLETCHER
Address: 597 SAYBROOK ROAD
 MIDDLETOWN CT 06457
Tel: 860 342 2227
Fax: 860 342 7352
e-mail: portlandasphalt@sbcglobal.net
web site:

Products and Services

Liquid asphalt supplier, tack coat supplier & contractor

POWER SERVICE, INC

MBE

Contact: JIM SANTOS
Address: 25 HYLESTEAD STREET
 PROVIDENCE RI 02905
Tel: 401 467 3450
Fax: 401 467 3430
e-mail: info@powerserviceri.com
web site:

Products and Services

Electrical

PRECISION GROUP INC.

MBE

Contact: HECTOR J. CABRERA
Address: PO BOX 3056
 PEABODY MA 01961
Tel: 978 535 4918
Fax: 978 535 9084
e-mail: precgroup@earthlink.net
web site:

Products and Services

Concrete Work	Landscaping
Curbing	Masonry work
Demolition	Paving
Fencing	Sidewalk
Hydroseeding	
Irrigation	

PRO-TAPE SPECIALTIES

WBE

Contact: JEAN HARTSELL
Address: 125 HUNTING ROAD
 AUBURN NH 03032
Tel: 603 483 2478
Fax: 603 483 2798
e-mail: ProTape@comcast.net
web site:

Products and Services

Drywall Taping



PYRAMID STEEL SERVICE, INC

WBE

Contact: JOANN KUTSCHMAN
Address: 1209 CENTER ROAD
 LYNDEBOROUGH NH 03082
Tel: 603 654 7877
Fax: 603 654 7877
e-mail:
web site:

Products and Services

Reinforcing Steel

Reinforcing steel placement, wire mesh placement.

RICHARDSON ELECTRICAL CO, INC.

WBE

Contact: LINDA RICHARDSON
Address: 17 BATCHELDER RD, PO BOX 1330
 SEABROOK NH 03874
Tel: 603 474 3900
Fax: 603 474 7755
e-mail: lrichardson@richardsonelectrical.us
web site:

Products and Services

Electrical
 Highway Lighting
 Pull Boxes, Light Bases
 Site Lighting

Temporary power systems, emergency power systems, data/communication wiring, instrument systems, system control & data acquisition systems, pumping systems & controls, bridge & pier corrosion protection, power distribution & generators.

RYEBROOK CONSTRUCTION, INC

WBE

Contact: LINDA LABBE
Address: 1464 NORTH BAYLEY HAZEN RD
 EAST RYEGATE VT 05042
Tel: 802 584 4250
Fax: 802 584 4133
e-mail: rlmeadow@aol.com
web site:

Products and Services

Bridge Deck Membrane	Concrete Work	Grading
Bridge Excavation	Culverts	Granular Backfill
Bridge Removal	Curbing	Masonry work
Bridge Work	Drainage	Road Construction
Clearing/Grubbing	Excavation	Pre-Cast Concrete
Cofferdam	Fencing	Rebar

Reinforcing Steel, Sewer Lines, Sidewalk, Sitework, and Trucking

SEACOAST ASPHALT SERVICES, INC

WBE

Contact: JENNIFER L NICOLA
Address: PO BOX 98
 HATFIELD MA 01038
Tel: 413 773 9247
Fax: 413 247 0232
e-mail: sasjen@valinet.com
web site:

Products and Services

Joint Repair
 Trucking
 Supplier Asphalt Cement

Rubber Joint Application; Tack Work; Supply of Asphalt Cement, Emulsions, and Aggregates



SEALCOATING, INC

WBE

Contact: ELI ZABETH WUORI
Address: 120 INDUSTRIAL PARK RD
 HINGHAM MA 02043
Tel: 781 749 6802
Fax: 781 749 2654
e-mail: ewuori@sealcoatinginc.com
web site: www.sealcoatinginc.com

Products and Services

Bridge Deck Membrane	Joint Repair
Bridge Excavation	Sawcut & Seal
Bridge Expansion Joints	Sealcoating
Bridge Waterproofing	
Bridge Work	
Crack Filling	

Micro surfacing; hot in-place asphalt surface recycling, reinforcing fabrics/membranes

T&E SAFETY SERVICES INC

WBE

Contact: EMILY POSENO
Address: PO BOX 171
 LISBON ME 04250
Tel: 207 751 0473
Fax: 207 353 4666
e-mail: maine_flaggers@yahoo.com
web site:

Products and Services

Flagging
Traffic Control

TAC CONSTRUCTION, INC

MBE

Contact: MARCOS CORBO
Address: PO BOX 912
 LEOMINSTER MA 01453
Tel: 978 534 6859
Fax: 978 534 6746
e-mail: tacconstru@aol.com
web site:

Products and Services

Curbing	Road Construction
Drainage	Sewer Lines
Inverts	Sidewalk
Joint Repair	Paving
Landscaping	
Masonry work	

Adjustments MH's & CB's

TAIBBI EQUIPMENT CORPORATION

WBE

Contact: LYNNE TAI BBI
Address: 80 NEW SALEM STREET
 WAKEFIELD MA 01880
Tel: 781 246 4010
Fax: 781 224 9594
e-mail: lataibbi@aol.com
web site:

Products and Services

Clearing/Grubbing	Grading
Culverts	Septic Systems
Demolition	Sewer Lines
Drainage	Sitework
Excavation	Trucking
Fire Hydrant Install	Water lines



TMD CONSTRUCTION SERVICES, LLC **MBE**

Contact: TUAN DANG
Address: PO BOX 481
 GOFFSTOWN NH 03045
Tel: 603 858 6440
Fax: 866 866 2854
e-mail: info@tmdconstructionservices.com
web site: tmdconstructionservices.com

Products and Services

Construction Management
 Carpentry
 Demolition
 General Contracting

Project Management (On and Off Site).

TRI -COUNTY QUARRY **WBE**

Contact: NINA M. THORNTON
Address: 33 GUI NEA ROAD
 BERWICK ME 03901
Tel: 207 698 9937
Fax: 207 698 9735
e-mail: nthornton33@comcast.net
web site:

Products and Services

Culverts
 Excavation
 Granular Backfill
 Tree Removal
 Trucking
 Low Bedding

Aggregates; Timber

TRI -STATE PAINTING, INC **WBE**

Contact: PAM LACROIX
Address: PO BOX 1240
 TILTON NH 03276
Tel: 603 286 7657
Fax: 603 286 7882
e-mail: placroix@GoToTSl.com
web site: www.GoToTSl.com

Products and Services

Bridge Painting
 Lead Abatement Services

Structural steel preparation; continent

TURNSTONE CORPORATION **WBE**

Contact: STACY CLARK
Address: 51 FRANKLIN STREET
 MILFORD NH 03055
Tel: 603 249 9300
Fax: 603 673 6138
e-mail: sclark@turnstonecorp.com
web site:

Products and Services

General Contracting
 Construction Management



WILDECA CORPORATION

MBE

Contact: WILSON DECASTRO
Address: PO BOX 365677
HYDE PARK MA 02136
Tel: 617 360 9986
Fax: 617 360 9987
e-mail: wildecainc@comcast.net
web site:

Products and Services

Concrete Work
Curbing
Excavation
Sidewalk

Truck rental

WOLCOTT CONSTRUCTION, INC

MBE

Contact: WILLIAM HURST
Address: 309 SAWTOOTH ROAD
GILMANTON NH 03237
Tel: 603 267 9400
Fax: 603 267 9045
e-mail: wolcott500@hotmail.com
web site:

Products and Services

Paving
Trucking

WORKSAFE TRAFFIC CONTROL INDUSTRIES, INC

WBE

Contact: LORENA R LAPRADE
Address: 115 INDUSTRIAL LN-BERLIN
BARRE VT 05641
Tel: 802 223 6154
Fax: 802 229 1848
e-mail: lorena@worksafetci.com
web site: www.worksafetci.com

Products and Services

Traffic Control

Traffic control devices including arrowboards, message boards and pavement marking materials.



ACERO GROUP INTERNATIONAL, INC **MWBE**

Contact: MIRIAM A. BAILEY
Address: PO BOX 314
 NEW HAMPTON NH 03256
Tel: 603 968 3774
Fax: 603 968 9524
e-mail: acerogroup@earthlink.net
web site:

Products and Services

Construction Management
 Engineering Services
 Roofing
 Site Inspection
 Civil Engineering

AMETHYST ENVIRONMENTAL, LTD **WBE**

Contact: KAREN LONG
Address: 22 LEE HILL ROAD
 LEE NH 03824
Tel: 603 659 4442
Fax: 603 679 1464
e-mail: amethyst@sprintmail.com
web site: www.amethystenvironmental.com

Products and Services

Sewer Lines
 Water lines

Safety and health consulting; and pipe line rehabilitation

AMRO ENVIRONMENTAL LABORATORIES CORP **WBE**

Contact: MARIAN BORDUZ
Address: 111 HERRICK STREET
 MERRIMACK NH 03054
Tel: 603 424 2022
Fax: 603 429 8496
e-mail: nicole@amrolabs.com
web site: www.amrolabs.com

Products and Services

Environmental

Environmental laboratory testing.

BAKER/WOHL ARCHITECTS, INC **WBE**

Contact: MARGARET EGARET WOHL
Address: 132 LINCOLN STREET
 BOSTON MA 02111
Tel: 617 350 7420
Fax: 617 350 5383
e-mail: gwohl@baker-wohl.com
web site: www.baker-wohl.com

Products and Services

Architecture
 Landscape Architecture
 Graphic Design
 Urban Design

Feasibility studies, design and construction administration services



BRYANT ASSOCIATES, INC

MBE

Contact: JACK BRYANT
Address: 98 NORTH WASHINGTON ST
 BOSTON MA 02114
Tel: 617 248 0300
Fax: 617 248 0212
e-mail: jbryant@bryant-engrs.com
web site: www.bryant-engrs.com

Bridge Design	Drainage	Traffic Signal Design
Bridge Inspection	Construction Management	
CADD Drafting	Road Design	
Civil Support Services	ROW	
Erosion Control	Survey	
Hydraulics	Traffic Analysis	

C & C CONSULTING ENGINEERS, LLC

MBE

Contact: PO-SHANG CHEN
Address: 214 LINCOLN STREET
 BOSTON MA 02134
Tel: 617 254 6930
Fax: 617 254 7631
e-mail: poshang.chen@cccellc.com
web site: www.cccellc.com

Bridge Design	Road Design
Bridge Inspection	Traffic Analysis
CADD Drafting	Traffic Signal Design
Civil Support Services	Transportation Planning
Environmental	Underground Utility TV Ins
Envt. Permitting	

CENTER FOR HEALTH, ENERGY & THE ENVIRONMENT, LLC

WBE

Contact: MARYALICE FISCHER
Address: PO BOX 424
 STRAFFORD NH 03884
Tel: 603 664 5097
Fax: 603 664 5109
e-mail: CHEE@metrocast.net
web site:

Environmental	Planning/Land Use Anal.
Erosion Control Plans	Public Participation
Envt Wetlands	Remediation
Geotechnical	Site Inspection
Hazardous Materials	Stormwater Management
Mapping	Technical Writing

Project environmental & regulatory compliance. Permitting-wetlands, NPDES, tanks; training, audits & due diligence, site assessment, regulatory compliance, SPCC, ICP, BMP & Health & Safety Plans.

COMPREHENSIVE ENVIRONMENTAL INC.

WBE

Contact: EILEEN PANNETIER
Address: 21 DEPOT STREET
 MERRIMACK NH 03054
Tel: 603 424 8444
Fax: 603 424 8441
e-mail: epannetier@ceiengineers.com
web site: www.ceiengineers.com

Civil Engineering	Hydraulics
Cost Estimating	Planning/Land Use Anal.
Drainage	Wetlands Delineation
Environmental Permitting	Wetlands Replication
Env. Assessments	Plan & Peer Reviews
Low Impact Development	Stormwater Management

GIS/AutoCAD Services, Hazardous Material Assessment, Inspection, and NEPA Documentation



CONCORD ENGINEERING GROUP, INC. **MBE**

Contact: BABAR M. KHAN
Address: 23 OSGOOD STREET
 WINDHAM NH 03087
Tel: 603 647 4581
Fax: 603 251 5806
e-mail: bkhan@concordengineeringgroup.com
web site:

Products and Services

CADD Drafting	Survey
Civil Support Services	Traffic Signal Design
Hydraulics	Erosion Control
Mapping	Drainage
Road Design	
ROW	

CONLEY ASSOCIATES **WBE**

Contact: JENNIFER CONLEY
Address: 214 CAMBRIDGE STREET
 BOSTON MA 02114
Tel: 617 742 5111
Fax: 617 742 5333
e-mail: jconley@conleyassociates.com
web site: www.ConleyAssociates.com

Products and Services

Traffic Analysis
Traffic Signal Design
Transportation Planning

DRAWINGS UNLIMITED, LTD **WBE**

Contact: PATRICIA BERRY
Address: 88 NASHUA RD BLDG B UNIT 3
 LONDONDERRY NH 03053
Tel: 603 434 2780
Fax: 603 434 2782
e-mail: drawingsunlimited@verizon.net
web site:

Products and Services

CADD Drafting
Architectural graphics and computer aided drafting service

E. ANN POOLE, ECOLOGICAL & ENVIRONMENTAL CONSULTANCY **WBE**

Contact: E. ANN POOLE
Address: PO BOX 890, 741 BEARD ROAD
 HILLSBOROUGH NH 03244
Tel: 603 478 1178
Fax: 603 478 1178
e-mail: eann@gsinet.net
web site: www.eannpoole.com

Products and Services

Environmental
Envt. Permitting
Envt. Wetlands
Planning/Land Use Anal.
Conservation Planning, Endangered Species Surveys, Habitat Evaluations, Impact Analyses, Natural Community Characterizations, Restoration/Enhancement, and Vegetative Stabilization.



ENGINEERING PARTNERS, INC

MWBE

Contact: CHERYL HUIE

Address: 430 FRANKLIN VILLAGE DR
FRANKLIN MA 02038

Tel: 781 444 4100

Fax: 781 444 4015

e-mail: epi@engpart.com

web site: www.engpart.com

Products and Services

Architectural	Drainage	Management Consulting
Bridge Design	Environmental	Planning/Land Use Anal.
Bridge Inspection	Envt. Wetlands	Railroad Design
CADD Drafting	Highway Lighting	Road Design
Construction Management	HVAC	Site Inspection
Civil Support Services	Hydraulics	Stormwater Management

Provide independent consultants to these and above disciplines. Technical Writing, Traffic Analysis, Traffic Signal Design, Transportation Planning, and Utility Lines

ENVIROTECH ASSOCIATES, INC

WBE

Contact: HELENA M HOLLAUER

Address: 390 MIDDLE ROAD
FALMOUTH ME 04105

Tel: 207 781 5483

Fax: 207 347 8291

e-mail: hhollauer@yahoo.com

web site:

Products and Services

Borings
Environmental
Envt. Permitting
Geotechnical
Hazardous Materials

Petroleum remediation; and environmental site assessments

FITZGERALD & HALLIDAY, INC

WBE

Contact: A RUTH FITZGERALD

Address: 72 CEDAR STREET
HARTFORD CT 06106

Tel: 860 247 7200

Fax: 860 247 7206

e-mail: rfitzgerald@fhiplan.com

web site: www.fhiplan.com

Products and Services

Environmental	Public Participation
Envt. Permitting	Technical Writing
Envt. Noise & Air	Traffic Analysis
Envt. Wetlands	Traffic Signal Design
Historical	Transportation Planning
Planning/Land Use Anal.	

FORNATARO, LOUANN R.A., P.A..

WBE

Contact: LOUANN FORNATARO, RA, FCSI

Address: 196 MAIN STREET, SUITE 200
NASHUA NH 03060

Tel: 603 882 1115

Fax: 603 882 1115

e-mail: requestinfo@fornataroarchitecture.com

web site: www.FornataroArchitecture.com

Products and Services

Architectural
Contract Interiors
Code Consultation
Building Evaluation



GM2 ASSOCIATES, INC

MBE

Contact: MADAN M GUPTA
Address: 730 HEBRON AVENUE
 GLASTONBURY CT 06033
Tel: 860 659 1416
Fax: 860 657 2926
e-mail: madan.gupta@gm2inc.com
web site: www.gm2inc.com

Products and Services

Bridge Design	Road Design
Bridge Inspection	Survey
CADD Drafting	Traffic Analysis
Civil Support Services	Traffic Signal Design
Highway Lighting	
Hydraulics	

Structure designing; highway facility design; and building design

GREEN INTERNATIONAL AFFILIATES INC

MBE

Contact: DIPAK KHAUND
Address: 407R MYSTIC AVENUE UNIT 25
 MEDFORD MA 02155
Tel: 781 391 5757
Fax: 781 391 8889
e-mail: dkhaund@greenintl.com
web site: www.greenintl.com

Products and Services

Architectural	ROW	Water lines
Bridge Design	Stormwater Management	Sewer Lines
Envt. Permitting	Survey	
Hydraulics	Traffic Analysis	
Public Participation	Traffic Signal Design	
Road Design	Transportation Planning	

GREEN SEAL ENVIRONMENTAL

WBE

Contact: JOHN BLAI SDELL
Address: 28 ROUTE 6A
 SANDWICH MA 02563
Tel: 508 888 6034
Fax: 508 888 1506
e-mail: christie@gseenv.com
web site: www.gseenv.com

Products and Services

CADD Drafting	Hazardous Materials	Survey
Construction Management	Planning/Land Use Anal.	Technical Writing
Environmental	Public Participation	Topographic
Envt. Noise & Air	Real Estate Services	
Envt Wetlands	Remediation	
Erosion Control	Stormwater Management	

Solid waste planning, design and permitting

H&S ENVIRONMENTAL, INC

WBE

Contact: DEBI HEIMS
Address: 1257 WORCESTER ROAD #310
 FRAMINGHAM MA 01701
Tel: 508 405 0980
Fax: 508 861 0305
e-mail: dheims@hsenv.com
web site: www.hsenv.com

Products and Services

Environmental
Hazardous Materials
Remediation
Site Inspection

Chemistry, data validation/data management; ASTM Phase I -V



HAGER GEOSCIENCE, INC

WBE

Contact: JUTTA L HAGER, Ph.D.
Address: 596 MAIN STREET
 WOBURN MA 01801
Tel: 781 935 8111
Fax: 781 935 2717
e-mail: jhager@hagergeoscience.com
web site: www.hagergeoscience.com

Products and Services

Environmental
 Geotechnical
 Vibration Monitoring
 Mapping
 Precision Utility Locating
 Tomography

Deep & shallow subsurface investigations, concrete scanning, tunnel and geologic mapping; Surface & borehole investigations for engineering, construction & environmental projects. Geophysical & geological data integration.

HAGER-RICHTER GEOSCIENCE, INC

WBE

Contact: DOROTHY RICHTER, P.G.
Address: 8 INDUSTRIAL WAY - D10
 SALEM NH 03079
Tel: 603 893 9944
Fax: 603 893 8313
e-mail: dorothy.richter@hager-richter.com
web site: www.hager-richter.com

Products and Services

Geotechnical
 Environmental

Geophysical and geological investigations, including surface and borehole; integration of geophysical and geological data.

HILL GROUP, T.L.

MWBE

Contact: TALMIRA L. HILL
Address: PO BOX 1058
 INTERVALE NH 03845
Tel: 781 485 9979
Fax:
e-mail: thill@thillgroup.org
web site: www.thillgroup.org

Products and Services

Socio-Economic Studies

Design, develop, and manage education, workforce, and youth development strategies involving partner agencies and organizations from multiple sectors.

INDEPENDENT ARCHAEOLOGICAL CONSULTING, LLC

WBE

Contact: KATHLEEN WHEELER
Address: 97 MORNING STREET
 PORTSMOUTH NH 03801
Tel: 603 430 2970
Fax: 603 430 2971
e-mail: kwheeler@iac-llc.net
web site: www.independentarchaeology.com

Products and Services

Archaeological



KAPPA MAPPING, INC

WBE

Contact: CLAIRE KI EDROWSKI

Address: 6 STATE STREET SUITE 301
BANGOR ME 04401

Tel: 207 942 5200

Fax: 207 942 5201

e-mail: clairek@kappamap.com

web site: www.kappamap.com

Products and Services

Aerial Mapping
Photogrammetry
Topographic Mapping
CADD Drafting

GIS Production Services

KAY NORDSTROM ENGINEERING, INC

WBE

Contact: KAY NORDSTROM

Address: 11 HATHORNE STREET SUITE 2
SALEM MA 01970

Tel: 978 594 5086

Fax: 978 594 5086

e-mail: kay.nordstrom@comcast.net

web site:

Products and Services

Public Transportation
Engineering Services
Project Management

KB ENVIRONMENTAL SCIENCES INC

WBE

Contact: L CARROLL BRYANT

Address: 9500 KOGER BLVD SUITE 211
ST. PETERSBURG FL 33702

Tel: 727 578 5152

Fax: 727 578 5210

e-mail: cbryant@kbenv.com

web site: www.kbenv.com

Products and Services

Environmental
Envt. Noise & Air
Hazardous Materials

KEVILLE ENTERPRISES, INC

WBE

Contact: BERNADETTE CARROLL

Address: 475 SCHOOL STREET SUITE 11
MARSHFIELD MA 02050

Tel: 781 837 3884

Fax: 781 837 4091

e-mail: ckeville@keville.com

web site: www.keville.com

Products and Services

Construction Management
Site Inspection
Cost Estimating
CPM Scheduling
Estimating
Inspection Services



KFH GROUP, INC

WBE

Contact: SUE KNAPP
Address: 4920 ELM STREET SUITE 350
 BETHESDA MD 20814
Tel: 301 951 8660
Fax: 301 951 0026
e-mail: sknapp@kfhgroup.com
web site: www.KFHGroup.com

Products and Services

Transportation Planning

KM CHNG ENVIRONMENTAL, INC

MBE

Contact: ERIKA SHATTUCK PARTON
Address: 25 MALL ROAD
 BURLINGTON MA 01803
Tel: 781 272 4060
Fax: 781 272 8867
e-mail: eshattuckparton@kmchng.com
web site: www.kmchng.com

Products and Services

Environmental
 Env. Noise & Air
 Vibration Monitoring
 Engineering Services

LIN ASSOCIATES INC

MBE

Contact: ROBERT S. T. LIE
Address: 2001 BEACON ST STE 310
 BRIGHTON MA 02135
Tel: 617 566 4216
Fax: 617 566 6038
e-mail: rlie@linboston.com
web site:

Products and Services

Civil Engineering
 Structural
 Bridge Design
 Bridge Inspection
 Architectural
 consulting Services

Roadway/highway & building site design, drainage & utilities. Rehabilitation & design of culverts; Building evaluations, rehab & new. Public safety, environment & education, commercial & housing facilities.

LITTLE RIVER SURVEY CO, LLC

WBE

Contact: PATRICIA S KULES, L.S.
Address: PO BOX 1208
 STOWE VT 05672
Tel: 802 253 8214
Fax: 802 253 2269
e-mail: tricia@littleriversurveyvt.com
web site:

Products and Services

CADD Drafting	Survey
Civil Support Services	Stormwater Management
Environmental	Wetlands Delineation
Erosion Control	
Hazardous Materials	
Mapping	
Large document copies and large document scanning	



LNC LANDSCAPE ARCHITECTURE

WBE

Contact: LISA COWAN
Address: 102 TUTTLE ROAD
 CUMBERLAND ME 04021
Tel: 207 829 3600
Fax: 207 829 3785
e-mail: lcowanlnc@maine.rr.com
web site:

Products and Services

Landscape Architecture

Landscape Architecture consulting services specializing in transportation related improvements and wetland mitigation design

MARLEY ENVIRONMENTAL, INC

WBE

Contact: MARTHA LEMMON
Address: PO BOX 2060
 WESTPORT CT 06880
Tel: 203 831 0123
Fax: 203 838 6410
e-mail: mlemmon@marleyenvironmental.com
web site: www.marleyenvironmental.com

Products and Services

Environmental Remediation
 Evt. Permitting Site Inspection
 Borings
 Evt. Noise & Air
 Hazardous Materials
 Historical

Environmental due diligence assessments and investigations of proposed/existing transportation corridors and intersections.

MORRIS COMMUNICATIONS

WBE

Contact: CAROL MORRIS
Address: 12 HIGH TIDE ROAD
 KENNEBUNKPORT ME 04046
Tel: 207 329 6502
Fax:
e-mail: cmorris@morriscomm.net
web site: www.morriscomm.net

Products and Services

Communication Services
 Marketing Services
 Public Participation

NATCOM, INC

MBE

Contact: SHALIN PATEL
Address: 5 TSI ENNETO ROAD SUI TE 86
 DERRY NH 03038
Tel: 781 405 2529
Fax: 781 207 0073
e-mail: sales@natcom.cc
web site:

Products and Services

CADD Drafting Technical Editing
 HVAC
 Software Services
 Stormwater Management
 Computer Programming
 System Docs. Support

Control Systems for Water/Sewer Stations, Tunnel Ventilation Control Systems, Factory Automation. Building Automation Systems, Provide Custom Programming Services for Automation and Communication Systems



NOBIS ENGINEERING, INC

MBE

Contact: KEN KOORNNEEF
Address: 18 CHENELL DRIVE
 CONCORD NH 03301
Tel: 603 224 4182
Fax: 603 224 2507
e-mail: info@nobisengineering.com
web site: www.nobisengineering.com

Products and Services

Environmental Remediation	Geotechnical
Envt Wetlands	Hazardous Materials
Envt. Permitting	Landscape Architecture
Civil Support Services	
Erosion Control	

NORTHSTAR HYDRO INC.

WBE

Contact: ELLEN K O'BRIEN
Address: 8 GO WAY
 WINTHROP ME 04364
Tel: 207 377 8043
Fax: 207 377 8043
e-mail: ekobrien@fairpoint.net
web site: www.Northstarhydro.com

Products and Services

Hydrology, hydraulics, specialized civil engineering services, roadways, bridges, and dams.

OAK SQUARE RESOURCES LLC

WBE

Contact: SUSAN BREGMAN
Address: PO BOX 35471
 BRIGHTON MA 02135
Tel: 617 783 8630
Fax: 617 783 8631
e-mail: susan@oaksquareresources.com
web site: www.oaksquareresources.com

Products and Services

Communication Services
 Marketing Services
 Public Participation
 Technical Writing
 Transportation Planning

Transit planning; market research; program evaluation; policy analysis; web design and development.

PEMCCO, INC.

MBE

Contact: BERNELL SHERROD
Address: 621 LYNNHAVEN PKWY STE 408
 VIRGINIA BEACH VA 23452
Tel: 757 437 8862
Fax: 757 437 8835
e-mail: Prescott.Sherrod@pemcco.com
web site: www.pemcco.com

Products and Services

Computer System Design
 Electrical
 Computer Programming



PRESERVATION COMPANY

WBE

Contact: LYNNE EMERSON MONROE
Address: 5 HOBBS ROAD
 KENSINGTON NH 03833
Tel: 603 778 1799
Fax: 603 788 1960
e-mail: preservationcompany@comcast.net
web site: www.preservationcompany.com

Products and Services

Environmental
 Historical

PROMATECH, INC

WBE

Contact: CARRIE STREAHLE
Address: 302 NEW JERSEY AVE
 RIVERSIDE NJ 08075
Tel: 856 461 3663
Fax: 856 461 3996
e-mail: cstreahle@promatechinc.com
web site: www.promatech.org

Products and Services

Construction Management
 CPM Scheduling
 Construction Inspection

 Cost estimating

QUANTUM CONSTRUCTION CONSULTANTS, LLC

WBE

Contact: LISA MARTIN
Address: 27 LOCKE ROAD
 CONCORD NH 03301
Tel: 603 224 0859
Fax: 603 224 3625
e-mail: Lmartin@quantum-cc.com
web site: www.quantum-cc.com

Products and Services

Architectural	Erosion Control Plans
Bridge Design	Hydraulics
Bridge Inspection	Road Design
Civil Support Services	Site Inspection
Construction Management	Transportation Planning
Drainage	

RESOURCE LABORATORIES, LLC

WBE

Contact: SUE SYLVESTER
Address: 124 HERITAGE AVENUE UNIT 10
 PORTSMOUTH NH 03801
Tel: 603 436 2001
Fax: 603 430 2100
e-mail: sues@reslabs.com
web site: www.reslabs.com

Products and Services

Environmental Testing

Services include drinkwater testing, hazardous waste testing, wastewater testing, soil/sediment testing and indoor air quality assessments/testing.



RLS & ASSOCIATES, INC

WBE

Contact: ROBBIE SARLES
Address: 3131 S. DIXIE HWY STE 545
 DAYTON OH 45439
Tel: 937 299 5007
Fax: 937 299 1055
e-mail: rls@rlsandassoc.com
web site: www.rlsandassoc.com

Products and Services

Transportation Planning

Provides transportation management and operations consulting services to transportation providers throughout the United States.

RUMNEY ASSOCIATES

WBE

Contact: MARY ANN RUMNEY
Address: 82 BRADLEY ROAD
 MADI SON CT 06443
Tel: 203 245 7046
Fax: 203 245 4207
e-mail: rumney@snet.net
web site:

Products and Services

CADD Drafting

Graphic Design

SMART ASSOCIATES, ENVIRONMENTAL CONSULTANTS, INC

WBE

Contact: MELI SSA SMART
Address: 72 NORTH MAIN STREET
 CONCORD NH 03301
Tel: 603 224 7550
Fax: 603 224 7890
e-mail: info@smartenvironmental.com
web site: www.smartenvironmental.com

Products and Services

Environmental
 Env. Permitting
 Env. Wetlands
 Erosion Control
 Hazardous Materials
 NPDES Permitting

Stormwater Management
 Environmental Assesments
 NEPA Documentation

STACEY DEPASQUALE ENGINEERING, INC

WBE

Contact: STACEY DEPASQUALE, PE
Address: 354 MERRI MACK ST SUITE 200
 LAWRENCE MA 01843
Tel: 781 726 6247
Fax: 978 897 3536
e-mail: Sdepasquale@sdepasquale.com
web site: www.sdepasquale.com

Products and Services

Civil Engineering
 Civil Support Services
 Construction Management
 Environmental
 Hydraulics
 Planning/Land Use Anal.

Site Inspection
 Stormwater Management
 Technical Writing
 Utility Lines

Civil and Environmental Engineering and Consulting Services



STEPHANIE LAHAR AND ASSOCIATES, LLC **WBE**

Contact: STEPHANIE LAHAR
Address: 17 STATE STREET
 MONTPELIER VT 05602
Tel: 802 223 2485
Fax: 802 223 7311
e-mail: stephanie.lahar@verizon.net
web site: www.stephanielahar.com

Products and Services

Public Participation
 Management Consulting

Strategic Planning and Collaborative Decision-Making Processes

STEPHENS ASSOCIATES **WBE**

Contact: BETHEL STEPHENS
Address: 60 NORTHRUP DRIVE
 BRENTWOOD NH 03833
Tel: 603 772 1417
Fax: 603 772 1418
e-mail: bahstephens@stephensengineers.com
web site: www.stephensengineers.com

Products and Services

Geotechnical
 Structural
 Seismic Consulting

STONEHILL ENVIRONMENTAL, INC **WBE**

Contact: ELISSA H STONE
Address: 600 STATE STREET SUITE 2
 PORTSMOUTH NH 03801
Tel: 603 433 1935
Fax: 603 433 1942
e-mail: estone@stonehillenvironmental.com
web site: www.stonehillenvironmental.com

Products and Services

Environmental
 Hazardous Materials
 Remediation
 Env. Due Diligence

Underground/Aboveground tank audit/upgrade/closure: Investigation and cleanup of contaminant impacted soils and groundwater: health and safety plan preparation.

SUSANNE SMITH MEYER LANDSCAPE ARCHITECT **WBE**

Contact: SUSANNE SMITH MEYER
Address: 14 SHAWMUT STREET
 CONCORD NH 03301
Tel: 603 226 3313
Fax: 603 226 3313
e-mail: ssmla@comcast.net
web site:

Products and Services

Landscape Architecture
 Site Planning
 Planting Plans



TRAFINFO COMMUNICATIONS, INC **MBE**

Contact: SUDHIR MURTHY
Address: 556 LOWELL STREET
 LEXINGTON MA 02420
Tel: 781 710 5380
Fax:
e-mail: smurthy@trafinfo.com
web site: www.trafinfo.com

Products and Services

IT Consulting
 Transportation Planning

Wireless data transmitters, internet-based telemetry products and services, and transportation consulting services.

TRANSACTION ASSOCIATES, INC **WBE**

Contact: CYNTHIA FRENE
Address: 709 MAIN STREET
 WALTHAM MA 02415
Tel: 781 895 1100
Fax: 781 895 1100
e-mail: cfrene@transactionassoc.com
web site: www.transactionassoc.com

Products and Services

Marketing Services
 Public Participation
 Survey
 Technical Writing
 Transportation Planning

Transportation services (shuttles)

TRANSIT SAFETY MANAGEMENT **WBE**

Contact: SUSAN MADIGAN
Address: ONE EAST MAIN STREET
 GEORGETOWN MA 01833
Tel: 978 352 4877
Fax: 978 352 7366
e-mail: transitsafety@verizon.net
web site: www.transitsafetymanagement.com

Products and Services

Transportation Planning

Rail transportation start up, safety; regulatory compliance, capacity analysis, and schedule planning

TRANSMART TECHNOLOGIES, INC **MBE**

Contact: JING (CONNIE) LI
Address: 2802 COHO STREET SUITE 102
 MADISON WI 53713
Tel: 608 273 4740
Fax: 608 273 4783
e-mail: connie@trafficonline.com
web site: www.trafficonline.com

Products and Services

Transportation Planning
 IT Consulting
 Survey
 Traffic Analysis
 Traffic Signal Design

Intelligent Transportation Systems (ITS), Geographic Information Systems (GIS).



TRIANGLE AERIAL SURVEYS, INC.

DBE

Contact: ALVARO BOLIVAR

Address: 7718 SIX FORKS RD SUITE 200
RALEIGH NC 27615

Tel: 919 787 8654

Fax: 919 787 7690

e-mail: al@triaerial.com

web site: www.triangle-aerial-surveys.com

Products and Services

Aerial Photography
Mapping
Photogrammetry

GIS and Orthophotography

UCG ASSOCIATES, INC

MWBE

Contact: YOVETTE DRAKE

Address: 10 S RIVERSIDE PLAZA, STE 1800
CHICAGO IL 60606

Tel: 312 474 7757

Fax: 312 474 6099

e-mail: yovettedrake@ucgassociates.com

web site:

Products and Services

Airport Planning
Geotechnical
IT Consulting
Management Consulting
Planning/Land Use Anal.
Socio-Economic Studies

Software Services

WAE DESIGN GROUP

WBE

Contact: LESLIE BOULTON, P.E.

Address: PO BOX 645
NEWBURY NH 03255

Tel: 603 763 0063

Fax: 603 763 0064

e-mail: waedesign@tds.net

web site:

Products and Services

CADD Drafting
Drainage Design
Erosion Control
Planning/Land Use Anal.
Road Design
Stormwater Management

Technical Writing



ACCURATE CONVEYOR

MBE

Contact: ROBERT TORRES
Address: 245 PECK LANE PO BOX 1883
 BRISTOL CT 06011
Tel: 860 748 0195
Fax: 860 582 3765
e-mail: accurateconveyor@sbcglobal.net
web site: accurateconveyor.com

Products and Services

Conveyor/Conveying equipment, material handling specialists, installation and service.

ADVANCED SECURITY SERVICES, INC

WBE

Contact: PAULA MARI NO
Address: 95 PLAI STOW RD SUI TE 211
 PLAI STOW NH 03865
Tel: 603 382 1300
Fax: 603 382 0030
e-mail: ericaadvsecure@choiceonemail.com
web site: www.advancedsecurityservices.net

Products and Services

Flagging
 Guard service, investigations and flagging

ADVANCED TECHNOLOGIES INTEGRATION, INC

MBE

Contact: LENNY HUI E
Address: 7301 OHMS LANE SUI TE 500
 MI NNEAPOLI S MN 55439
Tel: 952 345 1868
Fax: 952 345 1871
e-mail: lhuie@atiko.com
web site: www.atiko.com

Products and Services

Information Technology
 Computer Programming
 Software Services

ALICE BUCKNER CONSULTING

WBE

Contact: ALICE BUCKNER
Address: 5 AVERI LL ROAD PO BOX 70
 BROOKLI NE NH 03033
Tel: 603 672 5951
Fax: 603 672 0323
e-mail: abuckner@alicebuckner.com
web site:

Products and Services

Management Consulting
 Organization Development



ALTERNATE TRANSIT ADVERTISING, INC **WBE**

Contact: JANE CUTTER
Address: 295 BAYSIDE ROAD
 GREENLAND NH 03840
Tel: 603 436 0008
Fax: 603 766 0287
e-mail: atatransit@comcast.net
web site: www.atatransit.com

Products and Services

Marketing Services

Specialized in advertising and marketing- brochures, newsletters, promotional pieces. Transit advertising sales for public transportation systems

ATLANTIC COMPLEMENTARY MEDICAL SOLUTIONS, LLC **WBE**

Contact: SHARON O'CONNOR
Address: PO BOX 668
 HAMPTON NH 03843
Tel: 603 926 3332
Fax: 603 929 1989
e-mail: sharon@atlanticcomplementary.com
web site: www.atlanticcomplementary.com

Products and Services

Relaxation (guided imagery) CDs and hypnotherapy services

B&B OFFSET PRINTING COMPANY **WBE**

Contact: MICHELLE ROBBINS
Address: PO BOX 1346
 DOVER NH 03821
Tel: 603 749 2839
Fax: 603 749 1349
e-mail: michelle@bbprintco.com
web site:

Products and Services

Printing

Specializing in all your printing, copying and advertising speciality needs.

BENCHMARK OFFICE SYSTEMS, INC **WBE**

Contact: MICHELLE MCMANUS
Address: 58 RANGE ROAD
 WINDHAM NH 03087
Tel: 603 890 2474
Fax: 603 890 2436
e-mail: mmcmanus@benchmark-office.com
web site: www.benchmark-office.com

Products and Services

Office Equipment

Copier Equipment, Copier Supplies & Service, Printer & Fax Supplies & Service, Scanning Services, Computer Support and IT Support



BUXTON DRAFTING SERVICES

WBE

Contact: LORI BUXTON

Address: 4049 WILLISTON ROAD SUITE 2
SOUTH BURLINGTON VT 05403

Tel: 802 864 1833

Fax: 802 864 6568

e-mail: buxtonvt@aol.com

web site: www.buxtonvt.com

Products and Services

CADD Drafting
Mechanical Drawing

CADD drafting in all areas of design and residential construction management.

COLONIAL ENGRAVING CO., INC.

WBE

Contact: PAULINE SHORT

Address: 197 BALLARDVALE STREET
WILMINGTON MA 01887

Tel: 978 658 4756

Fax: 978 657 8844

e-mail: pauline@colonialengraving.com

web site: www.colonialengraving.com

Products and Services

Signs

Engraving of interior & exterior signs, ADA complaint signs, braille, tactile letters. Directional, nameplates, desk, door, badges, legend plates, wall plates, tags, fire signs, UID markings. Engraving on plastic, metal, & wood. Rotary & laser engravers.

COMPLETE ERRAND, THE

WBE

Contact: LYNN SUDLOW

Address: 7 VILLAGE GREEN
WEST LEBANON NH 03784

Tel: 603 298 6129

Fax: 603 298 5290

e-mail: lynn.sudlow@completeerrand.com

web site: www.completeerrand.com

Products and Services

Assistance Services
Errands

delivery, special projects, event coordination, concierge, personal and assistant services

CROSS CULTURAL COMMUNICATION SYSTEMS, INC

MWBE

Contact: ZARITA ARAUJO-LANE

Address: PO BOX 2308
WOBURN MA 01888

Tel: 781 729 3736

Fax: 781 729 1217

e-mail: zaraujo-lane@cccsorg.com

web site: www.cccsorg.com

Products and Services

Provides cross cultural communication issues through translation, interpreting and diversity training.



EL WATERMAN, INC **WBE**

Contact: LYLA WATERMAN

Address: 9 RHODES STREET
PLAINVILLE MA 02762

Tel: 508 699 3893

Fax: 508 699 3908

e-mail: watermanel@aol.com

web site:

Products and Services	
Manhole Coring	Sewer Lines
Pipe	Steel Erection
Plumbing	Stormwater Management
Pre-Cast Concrete	Water lines
Rebar	
Septic Systems	

EVENT BUILDERS, LLC **WBE**

Contact: MARCY WEEKS

Address: 152 SEVERANCE ROAD
MOULTONBOROUGH NH 03254

Tel: 603 544 2218

Fax: 603 544 2217

e-mail: eventz@worldpath.net

web site: www.eventbuilders.com

Products and Services	
Management Consulting	
Marketing Services	

FAST FORMLINERS, INC **DBE**

Contact: KEVIN PANGILINAN

Address: 115 WEST FLIER SUITE 109
PACIFIC MO 63069

Tel: 636 271 6291

Fax: 636 299 6297

e-mail: kevinpangilinan@sbcglobal.net

web site: www.fastformliners.com

Products and Services	
Concrete Products	
Concrete formliner manufacturer	

FREEDOM CAD SERVICES, INC. **WBE**

Contact: LAUREN M. PRIMMER

Address: 20 COTTON ROAD STE 201
NASHUA NH 03063

Tel: 603 864 1348

Fax: 603 864 1301

e-mail: lauren.primmer@freedomcad.com

web site: www.freedomcad.com

Products and Services	
Design of PCB layout, signal integrity and engineering service.	



GLOBAL ADVANCED TECHNOLOGY, INC. **WBE**

Contact: SHIRLEY YOUNG
Address: 24 LADDS WAY JAMES LANDING
 SCITUATE MA 02066
Tel: 781 545 3546
Fax: 781 545 5816
e-mail: Shirley@GATIs.com
web site: www.GATIs.com

Products and Services

Automatic target recognition and target tracking technology. Electronic and computer engineering services; including computer supplies. Compliance IT independent verification and validation. Plus energy audit, fixture retrofit & energy rebate.

GLOBAL MARINE CONSTRUCTION SUPPLY, INC **WBE**

Contact: YONA BOCCHINO
Address: 55 LUMBER ROAD SUITE 125
 ROSLYN NY 11576
Tel: 516 484 2900
Fax: 516 484 2950
e-mail: yona@procurematerials.com
web site: www.procurematerials.com

Products and Services

Marine Services
 Concrete Products
 Steel Products

Marine and material supplier for the construction industry

HIGHDATA SOFTWARE CORP **MBE**

Contact: SENRAJ SOUNDARARAJAN
Address: 2 KEEWAYDIN DRIVE
 SALEM NH 03079
Tel: 603 890 1251
Fax: 603 890 1276
e-mail: ssoundar@highdata.com
web site: www.highdata.com

Products and Services

IT Consulting
 Computer Programming
 Software Services

Web and wireless enabling existing applications. Software, Database, Platform conversion/re-engineering. Longterm maintenance & support. Fixed cost and timeline with quick project turnaround

HULK HEAVY TRANSPORT, INC **WBE**

Contact: LORETTA LACEK
Address: PO BOX 1207
 ZELLWOOD FL 32798
Tel: 352 343 3793
Fax: 352 343 4089
e-mail: lorettaht@earthlink.net
web site:

Products and Services

Trucking

Trucking brokerage and rigging crane and freight consultants



INNOVATIVE RESOURCE GROUP

WBE

Contact: JOANNE MASELLI-IRVING
Address: 27 WATER STREET SUITE 410
 WAKEFIELD MA 01880
Tel: 781 224 3400
Fax: 781 224 3454
e-mail: jirving@innovativeresource.com
web site: www.innovativeresource.com

Products and Services

Business Forms
 Printing
 Promotional Services
 Reprographics

Single source for commercial printing. Promotional products and Corporate apparel: stationery packages, brochures, business forms, invitations, annual reports, newsletters.

IVESIA SOLUTIONS, INC.

MBE

Contact: SENRAJ SOUNDARARAJAN
Address: 2 KEEWAYDIN DRIVE
 SALEM NH 03079
Tel: 603 890 1010
Fax: 603 890 1276
e-mail: ssoundar@ivesia.com
web site: www.ivesia.com

Products and Services

IT Consulting
 Computer Programming
 Software Services

Software outsourcing & custom software development; Web and wireless enabling existing application; platform conversion/re-engineering; fixed cost and timeline with quick turnaround

JAYMIL ACTIVE FURNITURE, INC.

WBE

Contact: JANICE L. MILLER
Address: 150 DOW STREET, TOWER 4
 MANCHESTER NH 03101
Tel: 603 629 9995
Fax: 603 629 9996
e-mail: service@jaymil.com
web site: www.jaymil.com

Products and Services

Office Equipment

Ergonomic furniture and accessories. Work includes pre-installation audit and post-installation training as needed and contracted for.

JONES AND COMPANY PROFESSIONAL CONSULTANTS

MWBE

Contact: AUDREY Y JONES, CPA
Address: 468 NORTH CAMDEN DRIVE
 BEVERLY HILLS CA 90210
Tel: 310 860 4785
Fax: 310 861 1332
e-mail: info@jonescocpa.com
web site:

Products and Services

Office of Certified Public Accountants, accounting, tax, and management consulting services.



JUTRAS SIGNS INC

WBE

Contact: CATHY CHAMPAGNE

Address: 711 MAST ROAD
MANCHESTER NH 03102

Tel: 603 622 2344

Fax: 603 622 2341

e-mail: cchampagne@jutrassigns.com

web site: www.jutrassigns.com

Products and Services

Concrete Work
Electrical
Excavation
Highway Lighting
Metal Fabrication
Sign Structures

Site Lighting
Traffic Signs

All types of signs (interior & exterior), flags, flagpoles, banners, electronic message centers, etc.

KT&T DISTRIBUTORS, INC.

MBE

Contact: KEVIN PORTER

Address: PO BOX 7362, 22 HYACINTH DR
NASHUA NH 03062

Tel: 603 888 1144

Fax: 603 888 7333

e-mail: kevin@kttistributors.com

web site: www.kttistributors.com

Products and Services

Distributor and broker for food, beverages, cleaning, recycling, power washing, merchandising and energy efficient lighting.

LEDGE LIGHT TECHNOLOGIES INC

MBE

Contact: OLORUNFEMI O. BAJOMO

Address: 88D HOWARD STREET
NEW LONDON CT 06320

Tel: 860 444 0138

Fax: 860 444 0274

e-mail: sales@ledgelight.com

web site: www.ledgelight.com

Products and Services

IT Consulting
Management Consulting
Software Services
Computer Programming

LESLIE SAUNDERS INSURANCE AGENCY

WBE

Contact: LESLIE SAUNDERS

Address: 949 FIELDS OF BOAZ DRIVE
CHARLOTTESVILLE VA 22903

Tel: 813 949 8964

Fax: 813 949 9655

e-mail: browdon@lsimi.com

web site: www.lsimi.com

Products and Services

Insurance/benefits, human resource training



LMA, INC **WBE**

Contact: SHERRI MALOUF
Address: 98 SPIT BROOK RD SUITE 201
 NASHUA NH 03062
Tel: 603 897 1200
Fax: 603 897 1300
e-mail: sherri@LMA.TO
web site: www.LMA.TO

Products and Services

Management Training and Consulting

MAC CONSULTING, LLC **WBE**

Contact: JULIE MATTLIN
Address: 6368 COOK ROAD
 GUILFORD IN 47022
Tel: 812 487 2547
Fax: 812 487 2547
e-mail: jmattlin@macconsultingllc.com
web site:

Products and Services

Financial management consulting. Economic or financial evaluation of projects.

MAESTRI CONSULTANTS, INC. **WBE**

Contact: SUSAN ANDERSON
Address: 4 BRUSHWOOD DRIVE
 ATKINSON NH 03811
Tel: 603 362 8368
Fax: 800 215 1274
e-mail: sa@maestriconsultants.com
web site: www.maestriconsultants.com

Products and Services

IT Consulting
 Communication Services
 Technical Writing

Training

MAGNATEX, INC. **MWBE**

Contact: JOYCE PALMER
Address: 2520 RIDGEMAR COURT
 LOUISVILLE KY 40299
Tel: 502 493 0558
Fax: 502 493 9862
e-mail: magnatex@magnatexinc.com
web site: N/A

Products and Services

Material Supplier: glass and rubber products to mass transit/railroad systems, stainless steel



McINTIRE BUSINESS PRODUCTS, INC

WBE

Contact: CYNTHIA CHRISTIE

Address: 128 K HALL STREET
CONCORD NH 03301

Tel: 603 225 3400

Fax: 603 225 4014

e-mail: cyndi@mbp-inc.com

web site:

Products and Services

Business Forms
Office Equipment
Office Furniture
Office Supplies

Reseller of office products and supplies. Specializing in binding, laminating, paper handling, shredders and branding imaging products. Also services equipment.

MOBILESTRAT, INC.

MBE

Contact: LARRY BLACKSHEAR

Address: 642 COWPATH ROAD
LANSDALE PA 19446

Tel: 215 237 3874

Fax: 215 612 6031

e-mail: lblackshear@mobilestrat.com

web site: www.mobilestrat.com

Products and Services

Communication Services

Cellular voice and data resale, wireless billing management, and public safety interoperability integration.

MOORE & SON, INC. OF DELAWARE, WILLIAM G.

WBE

Contact: AUDREY TROI SE

Address: PO BOX 6309, 218 SCHANCK RD #
FREEHOLD NJ 07728

Tel: 732 303 6049

Fax: 732 303 6075

e-mail: wgmoorelbr@aol.com

web site: www.moorethanwood.com

Products and Services

Supplier of lumber, timber, railroad ties, bridge timber decking & piling.
DOMESTIC & IMPORTED SPECI ES, MI LLWORK

MS. PIPE, LLC

WBE

Contact: KIMBERLY A. CADORETTE

Address: PO BOX 1295
SOUTH WINDSOR CT 06074

Tel: 860 875 0007

Fax: 860 875 2227

e-mail: kim@mspanellc.com

web site: www.mspanellc.com

Products and Services

Supply valves, pipes and fittings for construction industry, and provide CADD generated layout drawings.



NEW FORM BUILDING SYSTEMS INC.

WBE

Contact: MICHELLE ATHERTON

Address: 90 HERITAGE PARK RD SUITE 2
BUCKSPORT ME 04416

Tel: 207 469 2711

Fax: 207 433 1027

e-mail: info@newformsupply.com

web site: www.newformsupply.com

Products and Services

Concrete Products
Fence Products

Sales and distribution of precast concrete products, waterproofing and drainage products, pipe, erosion control, highway and bridge products, steel products, concrete accessories, and insulating concrete forms.

NEWPORT COMPUTER SERVICES, INC

DBE

Contact: SHIVA NANDA

Address: 20 SPAULDING AVENUE
ROCHESTER NH 03868

Tel: 603 926 4300

Fax: 603 332 9089

e-mail: shiva@newportcomputers.com

web site: www.newportcomputers.com

Products and Services

Computer Products

Reseller of used computer parts and peripherals

NORTH AMERICAN EQUIPMENT UPFITTERS, INC

WBE

Contact: JANET DUNICAN

Address: 6 SUTTON CIRCLE
HOOKSETT NH 03106

Tel: 603 624 6288

Fax: 603 624 6289

e-mail: mdunican@naeuinc.com

web site: www.naeuinc.com

Products and Services

Assembly - specializing in mounting ariel lift equipment for telephone, cable and power industries Work with customers to develop specifications for fleet. Also provide fire trucks and service.

ONE STOP COMPUTER SERVICES

MBE

Contact: STEPHEN CHEN

Address: 6 ALAN CIRCLE
LONDONDERRY NH 03053

Tel: 603 425 0081

Fax: 603 845 3636

e-mail: onestopcomputer@aol.com

web site: www.onestopcomputer.net

Products and Services

Computer Products

Computer Products: used, refurbished & new. Category from A-Z. Display Products: LCD's, plasma & video CRT's. Gaming Products: Parts, military simulators & services for arcade, game products distributors, game machine builders & suppliers



ONSITE COMMUNICATIONS, INC

WBE

Contact: MARY CANDELERI
Address: 24 GRACE DRIVE
 NASHUA NH 03062
Tel: 603 882 7391
Fax: 603 598 5228
e-mail: mcandeliери@onsitecomm.com
web site: www.onsitecomm.com

Products and Services

Communication Services

Telecom training, design, consulting and related services.

PROFESSIONAL CONVEYOR SOUTH, LLC

WBE

Contact: TRACY J. WIELAND
Address: PO BOX 15611
 FERNANDI NA BEACH FL 32035
Tel: 904 261 5396
Fax: 904 261 6496
e-mail: wieland153@aol.com
web site:

Products and Services

Installation, service, maintenance, repair and parts for baggage handling, postal handling, material handling and conveyor systems nationwide.

QUALITY FIRST SERVICE, LLC

WBE

Contact: ROSEMARY CULLEN
Address: 8 OTIS AVENUE
 SALEM NH 03079
Tel: 603 893 3222
Fax: 603 898 6298
e-mail: rcullen@qfslc.net
web site: www.qfslc.net

Products and Services

Telecommunications, engineering, installation and intergration

QUINN CABLE TECHNOLOGY

WBE

Contact: ALICE CUCHETTI
Address: 58 FAIRVIEW STREET
 MANCHESTER NH 03102
Tel: 603 668 7007
Fax: 603 668 9333
e-mail: quinncable@verizon.net
web site: www.quinncable.com

Products and Services

Technology products, bridges, routers, & network security. Bulk copper & fiber cable & connectors; Fiber & copper patch cables & assemblies; Distribution racks, patch panels, jacks, cable management, wall plates, surface boxes, labels, testers, etc.



RAPID - PREP, LLC **WBE**

Contact: NANCY PESCI NSKI
Address: 276 NEWPORT ROAD #214
 NEW LONDON NH 03257
Tel: 877 529 2124
Fax: 603 526 6288
e-mail: Donahuenan@aol.com
web site: www.rapidprep.com

Products and Services

Surface preparation/Equipment rental

REFILL TECH SERVICES, INC. **MWBE**

Contact: CHI A-LING WU
Address: 817 HUNGERFORD DRIVE
 ROCKVILLE MD 20850
Tel: 301 251 8603
Fax: 301 251 8604
e-mail: alicewu0503@hotmail.com
web site:

Products and Services

Toner Supplier

SEACOAST MASONRY SUPPLY **WBE**

Contact: SARA MAHONEY
Address: 60 MINNESOTA AVENUE
 WARWICK RI 02888
Tel: 401 736 0011
Fax: 401 736 8886
e-mail: sara@seacoastmasonry.com
web site: www.seacoastmasonry.com

Products and Services

Concrete Products
 Masonry Supply

Supplier of bricks, architectural block, flashing, insulation, wire, cleaning products, and masonry/concrete accessories

SIERRA INFOSYS, INC **DBE**

Contact: RAGHUNATHAN KUMAR
Address: 6001 SAVOY DRIVE SUITE 210
 HOUSTON TX 77036
Tel: 713 747 9693
Fax: 713 222 2434
e-mail: senthil@sierratec.com
web site: www.sierratec.com

Products and Services

Software Services

Custom software solutions, support and training



SIGN DESIGN INC. **WBE**

Contact: WHITNEY FERRIGNO
Address: 170 LIBERTY STREET
 BROCKTON MA 02301
Tel: 508 580 0094
Fax: 508 580 0096
e-mail: chris.dimestico@signdesigninc.com
web site: www.signdesigninc.com

Products and Services

Sign Structures

ADA, awnings, banners & flags, digital printing, exterior signage, interior signage, POP, trade show & events, vehicle graphics, wayfinding

SITUATION MANAGEMENT SYSTEMS, INC **WBE**

Contact: SHERRI MALOUF
Address: 98 SPIT BROOK RD SUITE 201
 NASHUA NH 03062
Tel: 603 897 1200
Fax: 603 897 1300
e-mail: smalouf@smsinc.com
web site: www.smsinc.com

Products and Services

Management Training and Consulting

SMART ASSISTIVE TECHNOLOGIES, LLC **WBE**

Contact: LORI SMART
Address: 35 INDUSTRIAL WAY SUITE 150
 ROCHESTER NH 03867
Tel: 603 330 3533
Fax: 603 335 5282
e-mail: lori@smartati.com
web site: www.smartati.com

Products and Services

General technology training and assistive technology products/training.

SOEDER ASSOCIATES, LLC **WBE**

Contact: LISA P SOEDER
Address: 241 ASYLUM ST, SUITE 700
 HARTFORD CT 06103
Tel: 860 246 1600
Fax: 860 246 1700
e-mail: lsoeder@soeder-associates.com
web site: www.soeder-associates.com

Products and Services

Legal Services

Legal services: bond, special tax and trustee counsel services in municipal and corporate finance transaction



SOFTWARE EVOLUTION, INC.

WBE

Contact: SANDRA IERARDI

Address: PO BOX 69
AMHERST NH 03031

Tel: 603 672 3993

Fax: 603 672 3993

e-mail: sierardi@yahoo.com

web site: www.softev.com

Products and Services

IT Consulting
Software Services

SOFTWARE TECHNOLOGY INTERNATIONAL

MBE

Contact: PARAMASI VA N. MUTHUVELRA

Address: 400 AMHERST ST SUITE 403
NASHUA NH 03063

Tel: 603 881 3033

Fax: 603 886 5839

e-mail: sti@stic.com

web site: www.stic.com

Products and Services

Software Services
Computer Programming

STANDA, INC

WBE

Contact: ANDREA DUCHESNEAU

Address: PO BOX 1008
MILTON NH 03851

Tel: 603 652 7225

Fax: 603 652 7354

e-mail: david@standa.com

web site: www.standa.com

Products and Services

Full service private investigation agency, security agency and consulting firm.

STAY SAFE TRAFFIC PRODUCTS, INC

WBE

Contact: CATHERINE SCHOENENBERGER

Address: 38 LOWELL ROAD
WESTFORD MA 01886

Tel: 978 692 2114

Fax: 978 692 7900

e-mail: Staysafetraffic@aol.com

web site: www.staysafetraffic.com

Products and Services

Traffic Signs

Temporary Traffic Control (TCC), Safety Equipment and Apparel for Work Zone, Brackets, Posts, Pavement Markings, and Connecting Hardware



SULLIVAN CREATIVE SERVICES LTD **WBE**

Contact: PAMELA SULLIVAN
Address: 241 GRAPEVINE ROAD
 DUNBARTON NH 03046
Tel: 603 774 0836
Fax: 617 597 0144
e-mail: pam@sullivancreative.com
web site: www.sullivancreative.com

Products and Services

Graphic Design
 Advertising Services
 Marketing Services

GRAPHIC DESIGN and ADVERTISING

SUPERIOR STEEL FABRICATION COMPANY INC **MBE**

Contact: ROBERT GRIER
Address: PO BOX 338
 KINGSTON NH 03848
Tel: 781 599 7612
Fax: 781 592 2190
e-mail:
web site:

Products and Services

Steel Erection
 Steel Products

SYMBIOSYS SOLUTIONS, INC. **MWBE**

Contact: JYOTHI SHANKER
Address: 1 HADLEY DRIVE
 NASHUA NH 03062
Tel: 603 880 7771
Fax: 603 595 4855
e-mail: Jyothi@Symbiosysinc.com
web site: www.symbiosysinc.com

Products and Services

Software Services
 IT Consulting
 Computer Programming

TASC SERVICE CORPORATION **WBE**

Contact: JARED EWELL
Address: 73 NEWTON ROAD PO BOX 1315
 PLAINSTOW NH 03865
Tel: 603 382 1114
Fax: 603 382 2377
e-mail: jared@tasctech.com
web site: www.tasctech.com

Products and Services

CADD Drafting
 IT Consulting
 Management Consulting
 Software Services
 Technical Writing
 Marketing Services

Professional services, staffing services, engineering, design, drafting, programming, IT consulting, project management, and technical support.



TECH-N-GO CORPORATION

WBE

Contact: BETH MCFARLANE
Address: PO BOX 754
 GREENLAND NH 03840
Tel: 877 460 8324
Fax: 603 431 8554
e-mail: bmcfarlane@tech-n-go.com
web site: www.tech-n-go.com

Products and Services

Computer Products
 Office Supplies
 Software Services
 Information Services
 Bookkeeping Services
 IT Consulting
 MAC and PC service; network administration; biometric security; off-site backups;
 service contracts

TFE RESOURACES, LTD

WBE

Contact: RICHARD SWARTZ
Address: 1307 WHITE HORSE ROAD
 VOORHEES NJ 08043
Tel: 856 627 7330
Fax: 856 772 3839
e-mail: rswartz@tferesources.com
web site: www.tferesources.com

Products and Services

Provides HR & Educational consulting & training. As well as consulting & flow measurement services to municipal water and sewer authorities & agencies.

TRANSLUCENT WALL SYSTEMS, LLC

WBE

Contact: ERIN BEACH
Address: 133 US ROUTE 4 #8
 ENFIELD NH 03748
Tel: 603 632 7977
Fax: 603 632 3554
e-mail: erinbeach@charter.net
web site: murphyandassociates.org

Products and Services

Install translucent building systems and windows

TRS QUALITY ASSURANCE

WBE

Contact: STEPHANIE LABBE-WALLACE
Address: 2 OLD COACH ROAD
 ATKINSON NH 03811
Tel: 603 362 5797
Fax: 603 362 4472
e-mail: wallace362@msn.com
web site:

Products and Services

Quality assurance testing, adherence to state contracts for telecommunication relay services, call handling procedures.



VHG LABS, INC

WBE

Contact: SUSAN J EVANS NORRIS

Address: 276 ABBY ROAD
MANCHESTER NH 03103

Tel: 603 622 7660

Fax: 603 622 5180

e-mail: sue@vhglabs.com

web site: www.vhglabs.com

Products and Services

Material Testing

Chemical Analysis, and Calibration Standards. Analytical Laboratory Supplies and Services